

Charleston Forge

2020 - 2022



Contents

About Charleston Forge	2
Jarrett Bay Collection	7
Greenbrier Collection	8
Katy Skelton Collection	9
Heather Daily Collection	10
Consoles	12
Desks	48
Dining Tables	54
Drink Tables	70
Occasional Tables	102
Barstools & Counterstools	156
Benches & Ottomans	172
Chairs	184
Étagères	196
Bedroom	204
Metal Finishes	210
Wood Finishes	212
Glass	214
Leather	218
Fabric	220
Custom Program	224
Product Index	226



With the welding complete, a grinder prepares a Sutton Dining Table base for the paint line.

About Charleston Forge

We are a manufacturer of high-end, steel and wood furniture located in the Blue Ridge Mountains of western North Carolina. Our entire product line, which includes occasional furniture, barstools, beds, desks, étagères, and seating, is manufactured at our Boone, North Carolina factory. Add that to the fact that 90% of our vendors are located within 100 miles of our factory, it's easy to see that we are indeed American made.

Founded in 1984 with a commitment to building quality furniture and providing impeccable customer service, every single piece of furniture is built to order, by hand. This means that our product is easily customized and also gives us the capability to produce completely unique products to your specifications.

All our products begin with a hand-crafted steel base. Tables are available with a wide range of specialty glass and solid wood tops, and all our upholstered seating is available with COM, as well as our wide range of stock fabrics and leathers. We powder coat our steel frames, a process that is more durable than wet paint and is more environmentally friendly too. Our commitment to environmental responsibility extends to our steel, which is recycled, and to our wood products, all of which are harvested from the region's sustainable forests. You can feel good about buying our furniture and the quality is second to none — our products are built for a lifetime of use.

Contact Us

tel. 828.264.0100

fax. 828.264.5901

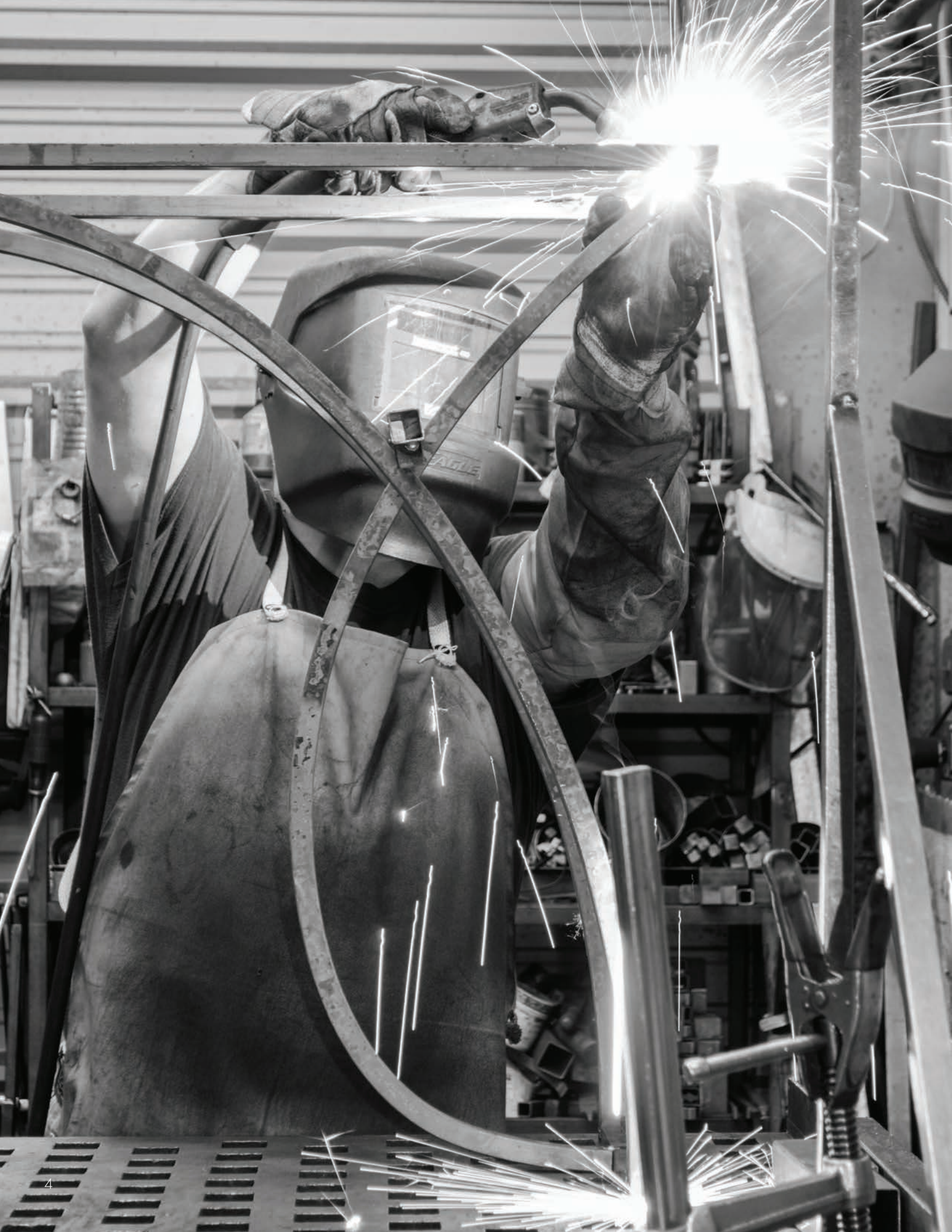
info@charlestonforge.com

customs@charlestonforge.com

www.charlestonforge.com



One of our forgers uses a power hammer to taper and texture a console leg. Steel needs to be heated to about 1200 degrees so that it is malleable enough to shape.



At A Glance

Our Products

- We offer more than 300 products across a variety of categories.
- Every piece is made to order, by hand, at our Boone, North Carolina factory.
- All products can be customized.

Materials & Finishes

- All bases are made of either solid or tubular steel.
- Standard metal paint finishes are all durable, powder coat process paints.
- Premium metal finishes feature hand-painted top coats on a powder coat base.
- All wood tops and shelves are made of solid wood.
- Choice of a wide range of wood finishes.
- A variety of laminated, tinted, and textured premium glass tops are available.
- All our fabrics are Crypton treated, stain and water-resistant material.
- All our leathers are Crypton treated, meaning they are stain, water, and bacteria-resistant.
- COM available on all upholstered products.

Sustainability

- We use recycled steel to create our furniture and we recycle any remaining scrap.
- Nearly all our wood comes from the surrounding Appalachian region, whose forests are certified by the USDA as growing at a rate of 3 trees for every one harvested.
- Our powder coat paint system is far more environmentally friendly than wet paint techniques.
- Our factory, offices, and forges are all heated using propane, which is nearly twice as efficient as natural gas and creates less pollution.
- Our on-demand packaging system minimizes cardboard waste by custom cutting each box.
- More than 90% of our suppliers are located within 100 miles of our factory, which helps minimize the impact of transportation of materials.

Factory & Offices

251 Industrial Park Drive
Boone, NC 28607
828.264.0100

High Point Showroom

311 N. Hamilton Street
Second Floor
High Point, NC 27260
336.884.0198
(Open during Market only)

Las Vegas Showroom

World Market Center - A242
495 S Grand Central Pkwy
Las Vegas, NV 89106
702.916.3777
(Open year - round)

Our Design Principal

At Charleston Forge we're concerned about form and function and building our products in a way that always ensures impeccable quality. This means not only creating a wide variety of striking designs, but doing so in a way that enhances how they are used, rather than sacrificing some element of functionality. We put careful consideration into how we can utilize the skills of our craftsmen to use the materials we have at hand in unique ways. This means using their knowledge to develop new techniques to forge and texture steel in ways that no one else is doing, anywhere. We're constantly looking for ways to expand what we offer and to do so in a way where we're not repeating ourselves. It's this, combined with our dedication to great quality and superior customer service, that keeps people coming back year after year to buy our products.

Our Design Partners

From the very start of our partnership with Jarrett Bay Home, Charleston Forge's commitment has been to develop a line of furniture with a coastal aesthetic, whose designs are inspired by the beauty of Jarrett Bay Boats, and the lifestyle they represent.

We achieve this by designing furniture inspired by maritime elements and features found on Jarrett Bay Boats. These range from subtle interpretations of the Carolina Flare bow's elegant curve, to the silhouette of the Tuna Tower, and the sculptural beauty of the humble boat cleat and the propeller.

Both Jarrett Bay Boatworks and Charleston Forge are North Carolina manufacturers who draw on generations-long traditions in their respective fields. Both are known for their distinctive designs and their forward-looking approach to product development. Both focus on creating products of beauty that are built to be used on a daily basis, and to retain their beauty and value for decades to come.

JARRETT BAY
— Home —



Nestled in the Allegheny Mountains of West Virginia, The Greenbrier is a world-renowned resort and National Historic Landmark that has been welcoming guests from around the world since 1778. The natural mineral springs that drew the first guests more than 235 years ago continue to lure visitors to the 11,000-acre luxury retreat. With a guest list that includes 26 of the country’s presidents, America’s Resort has long been a favorite destination of royalty, celebrities, and business leaders alike.

Charleston Forge is proud to be partnering with The Greenbrier to create Greenbrier Lifestyle Collection home furnishings that reflect the beauty, quality, and appreciation of the finer things in life that this beautiful locale represents.

the KATY SKELTON collection



Katy Skelton enjoys the challenge of solving design problems from the standpoint of both form and function — she believes in creating products that are designed and manufactured to be both beautiful and practical. "I try to find what is missing in the market," says Katy. "I'm always looking for new."



Each of these designs has been brought to fruition through close collaboration with Charleston Forge to ensure the highest quality. Her work has been featured in numerous publications, including *Vogue*, *Elle Décor*, *Garden & Gun*, *Food & Wine*, *Dwell*, and *Home Accents Today*.

SOUTHERN
REVIVAL

by Heather Daily



Texas born, California raised, and reinvented in the South, furniture designer Heather Daily is an artist through and through. In the three decades since moving to Nashville, Tennessee, she has seen her adopted hometown grow into a vibrant, modern city. That evolution has lead Heather to her most recent endeavor — the Southern Revival Collection.

“I’m inspired by the rejuvenation and the revival of style found throughout the southern United States,” she says. “I’ve used that as inspiration in designing a line of home furnishings that encompass the redefinition of elegant comfort.”

Made in America



West End Side Table
7326 w 25¼ x d 18¼ x h 23
Shown in Burnished Iron finish (15)
Clear Coat on Walnut top with
Natural Distressing (CC-WA-ND)



Consoles



Hatteras 70" Console

7807 w 70 x d 16½ x h 34¼

Shown in Burnished Iron finish (15)
Cashew on Maple top and shelf
with Natural Distressing (CA-M-ND)

JARRETT BAY
— Home —



Spa 34" Console
7739 w 36 x d 12 x h 32
Shown in Champagne finish (72)
Alpine on Maple top and shelf
with Natural Distressing (AP-M-ND)

Made in America



West End 54" Console
7329 w 54¼ x d 11¾ x h 32
Shown in Alchemy finish (77)
Glass top and shelf (GL)





Spa Entertainment Console
7742 w 70¼ x d 16¼ x h 33¾
Shown in Burnished Iron finish (15)
Brentwood on Maple top and shelf
with Natural Distressing (B-M-ND)



Forgers use pneumatic power hammers to shape and texture the solid steel we use in our furniture.



Ashford Console
7727 w 58 x d 13½ x h 32
Shown in Champagne finish (72)
Glass top and shelf (GL)



Fillmore Console
7606 w 52 x d 11 x h 32
Shown in Charcoal finish (73)
Glass top (GL)

Made in America

the **KATY SKELTON** collection



Crawford 54" Console
6626 w 56¾ x d 12¾ x h 32
Shown in Alchemy finish (77)
Glass top and shelf (GL)



Manhattan 54" Console

7006 w 54 x d 11 x h 32

Shown in Champagne finish (72)
Cashew on Maple top and shelf with
Natural Distressing (CA-M-ND)



Biscayne 60" Console

7976 w 60 x d 10 x h 30

Shown in Charcoal finish (73)
Clear Coat on Maple top with
Natural Distressing (CC-M-ND)

JARRETT BAY
— Home —



Beaufort 34" Console
6994 w 35 x d 11 x h 32
Shown in Gunmetal finish (79)
Alpine on Maple top with
Natural Distressing (AP-M-ND)

Also available
6997 Beaufort 54" Console



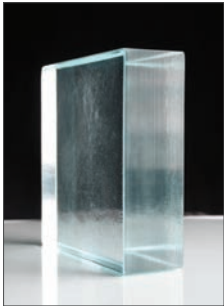
Beaufort 70" Console
6993 w 71 x d 11 x h 32
Shown in Burnished Iron finish (15)
Cashew on Maple top with
Natural Distressing (CA-M-ND)

JARRETT BAY
— Home —

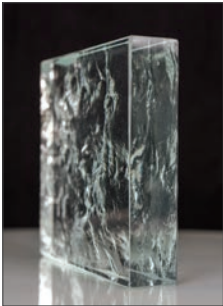


Calico Bay 70" Console
7991 w 71 x d 9¾ x h 32
Shown in Brushed Silver finish (59)
Seascape Fusion Glass top and a
mirror shelf (GL2S-GLM)

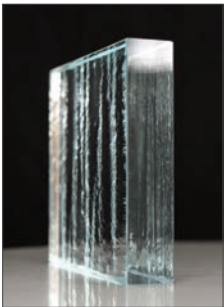
At right
Fusion Glass is available in four
different base textures: Minimal,
Seascape, Glacier and Pebble.



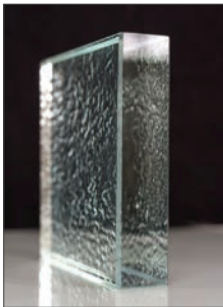
Minimal (GL2)



Seascape (GL2S)



Glacier (GL2G)



Pebble (GL2P)

Made in America

Calico Bay 34" Console
7990 w 35 x d 9¾ x h 32
Shown in Brushed Silver finish (59)
Seascape Fusion Glass top (GL2S)





Spa Gathering Console
7743 w 74¼ x d 20¼ x h 36
Shown in Brushed Silver finish (59)
Raven on Maple with
Natural Distressing (R-M-ND)



Jasper Gathering Console
7532 w 74 x d 18 x h 36
Shown in Brushed Silver finish (59)
Brentwood on Maple with
Natural Distressing (B-M-ND)



Greenbrier
LIFESTYLE
COLLECTION

Spa Backless Counterstools 26"
C933 Dia 17¾ x h 26
Shown in Burnished Iron finish (15)
Porcelain fabric cushion (F27)
Seat height is 26

Also available
C934 Spa Backless Barstool 30"

Spa Gathering Console
7743 w 74¼ x d 20¼ x h 36
Shown in Brushed Silver finish (59)
Raven on Maple with
Natural Distressing (R-M-ND)



Skilled welding is always important, especially so on such minimalist pieces as the Collins Collection.

the KATY SKELTON collection



Collins 54" Console
6606 w 55¼ x d 12¼ x h 32
Shown in Champagne finish (72)
Bronze Glass top with a Clear Coat on Walnut shelf
with Natural Distressing (GLB-CC-WA-ND)



Collins Storage Console

6611 w 55½ x d 12¼ x h 32

Shown in Champagne finish (72)
Brentwood on Maple top and drawer with
Natural Distressing and a Bronze Glass
shelf (B-M-ND-GLB)

Taylor Console

6420 w 52½ x d 11½ x h 35

Shown in Antique Pewter finish (70)
Wheat on Maple top with
Natural Distressing (W-M-ND)



the KATY SKELTON collection

Belvedere Bar Cart

8006 w 36 x d 16½ x h 34

Shown in Charcoal finish (73)

Top and middle shelves are glass. Bottom
shelf is Clear Coat on Walnut with
Natural Distressing (CC-WA-ND-GL)





Cooper 34" Console

6135 w 34 x d 10 x h 32

Shown in Burnished Iron finish (15)

Fusion Glass top (GL2)



Right

Cooper 34" Console

6135 w 34 x d 10 x h 32

Shown in Burnished Iron finish (15)

Saddle on Maple top with Natural Distressing (S-M-ND)

Also available

6146 Cooper 54" Console

Left

Cooper 34" Chairside Console

6145 w 34 x d 10 x h 21 1/4

Shown in Burnished Iron finish (15)

Seascape Fusion Glass (GL2S)



Cooper 70" Console

6125 w 70 x d 10 x h 32

Shown in Burnished Iron finish (15)
Saddle on Maple top with Natural
Distressing and Facet Glass inlay
(S-M-ND-GLF)



A Cooper 70" Console is prepared for boxing. The frame is first wrapped in a thick, fabric sheet, then in plastic, and then placed in a custom-cut, cardboard box. The legs and corners of the frame will be further protected by heavy foam and carboard spacers inside the box. The glass top will ship in a separate box.

Newhart 34" Console

5410 w 34 x d 8 x h 38½

Shown in Antique Pewter finish (70)
Clear Coat on Maple top with
Natural Distressing (CC-M-ND)

Also available

5411 Newhart 70" Console



Watson 70" Console

6119 w 70½ x d 9 x h 32¼

Shown in Burnished Iron finish (15)
Clear Coat Maple top with
Natural Distressing (CC-M-ND)

Watson 34" Console

7120 w 35 x d 8½ x h 32¼

Shown in Burnished Iron finish (15)
Saddle on Maple top with
Hand-Planed Distressing (S-M-HP)





Roundabout Console
6206 w 46½ x d 15 x h 30
Shown in Argento Antico finish (31)
Glass top (GL)



Lotus Console
6325 w 55 x d 18 x h 31
Shown in Burnished Iron finish (15)
Glass top (GL)

Fontana Console
6131 w 45 x d 14 x h 30
Shown in Champagne finish (72)
Glass top (GL)



Springhouse 34" Console
7706 w 34 x d 8½ x h 32
Shown in Burnished Iron finish (15)
Cashew on Maple top with
Natural Distressing (CA-M-ND)

A welder uses a dummy wood top to ensure that the base of the Springhouse End Table that he is fabricating will fit perfectly once it is paired with its actual top when it reaches assembly.





Linville 70" Console
6557 w 71 ¼ x d 16 x h 32¾
Shown in Charcoal finish (73)
Brentwood on Live-Edge Maple top with
Natural Distressing (B-LEM-ND)



Nashville 54" Console
7309 w 57¾ x d 13½ x h 32
Shown in Charcoal finish (73)
Clear Coat on Maple top and shelf
with Natural Distressing (CC-M-ND)

Monarch 55" Console
5515 w 55 x d 12 x h 33¾
Shown in Champagne finish (72)
Raven on Maple top with
Natural Distressing (R-M-ND)





Above and left

Winston 60" Console

T875 w 60 x d 20 x h 30¼

Shown in Marrone Antico finish (11)

Glass top (GL) with a Saddle on Maple shelf
with Natural Distressing (S-M-ND)



Omega 60" Console

7510 w 60 x d 19¾ x h 30¾

Shown in Burnished Iron finish (15)

Glass top (GL)

Triumph Console

6294 w 54 x d 18 x h 29½
Shown in Burnished Iron finish (15)
Glass top (GL)



Nash 54" Console

7215 w 54 x d 10 x h 30¾
Shown in Burnished Iron finish (15)
Saddle on Maple top with
Natural Distressing (S-M-ND)



Sawhorse 70" Console

6309 w 70 x d 16½ x h 31
Shown in Burnished Iron finish (15)
Clear Coat on Maple shelves with
Hand-Planed Distressing (CC-M-HP)



Camden Console

6053 w 55¾ x d 17½ x h 30¼
Shown in Brushed Silver finish (59)
Clear Coat on Maple top with
Natural Distressing and a Glass shelf
(CC-M-ND-GL)

Desks



Greenbrier
LIFESTYLE
COLLECTION



Collins Desk

1250 w 57 x d 25 x h 31 ½

Shown in Charcoal finish (73)
Raven on Maple top and drawer
with Natural Distressing (R-M-ND)

Also available with a two-USB
power port option. Standard
placement is top right.

At left

Ashford Desk

1260 w 66 x d 30 x h 30

Shown in Burnished Iron finish (15)
Clear Coat on Maple top with
Natural Distressing (CC-M-ND)

At left

Astor Side Chair

C915 w 17 x d 20 x h 33 ½

Shown in Charcoal finish (73)
Porcelain fabric cushion (F27)
Seat height is 19



Above

Talmadge Desk

1215 w 50 x d 28 x h 29¼
Shown in Argento Antico finish (31)
Saddle on Maple top with
Natural Distressing (S-M-ND)

See price list for additional top
options and dimensions.

At right

Cooper Desk

1210 w 50 x d 30 x h 29¼
Shown in Burnished Iron finish (15)
Alabaster on Maple top with
Natural Distressing (AB-M-ND)

Fresno Chair

C440 w 17½ x d 22 x h 34
Shown in Burnished Iron finish (15)
Alabaster on Maple seat with
Natural Distressing (AB-M-ND)
Seat height is 20





Astor Side Chair

C915 w 17 x d 20 x h 33½

Shown in Charcoal finish (73)
Onyx leather cushion (L411)
Seat height is 19

Park West Desk

1225 w 54 x d 25¼ x h 30

Shown in Charcoal finish (73)
Glass top (GL)

Newhart Desk

1220 w 50 x d 28 x h 30¼

Shown in Oil-Rubbed Bronze finish (78)
Brentwood on Maple top and drawer
with Natural Distressing (B-DM-ND)

See price list for additional top
options and dimensions.



Made in America

JARRETT BAY
— Home —

Beaufort Desk

1240 w 64 x d 29 x h 30

Shown in Burnished Iron finish (15)
Brentwood on Maple top with
Natural Distressing (B-M-ND)



Dining Tables



Emmitt Counterstool 26"

C941 w 18¼ x d 21½ x h 33½

Shown in Burnished Iron finish (15)

Rosewood leather cushion (L413)

Seat height is 26

Also available

C942 Emmitt Barstool 30"

Emmitt Counter Height Table

T16C Dia 36 x h 36

Shown in Burnished Iron finish (15)

Glass top (GL)

Also available

T16B Emmitt Bar Height Table

T16D Emmitt Dining Table



The Casual Dining Program

Ten base styles, three base heights, wood and glass tops.

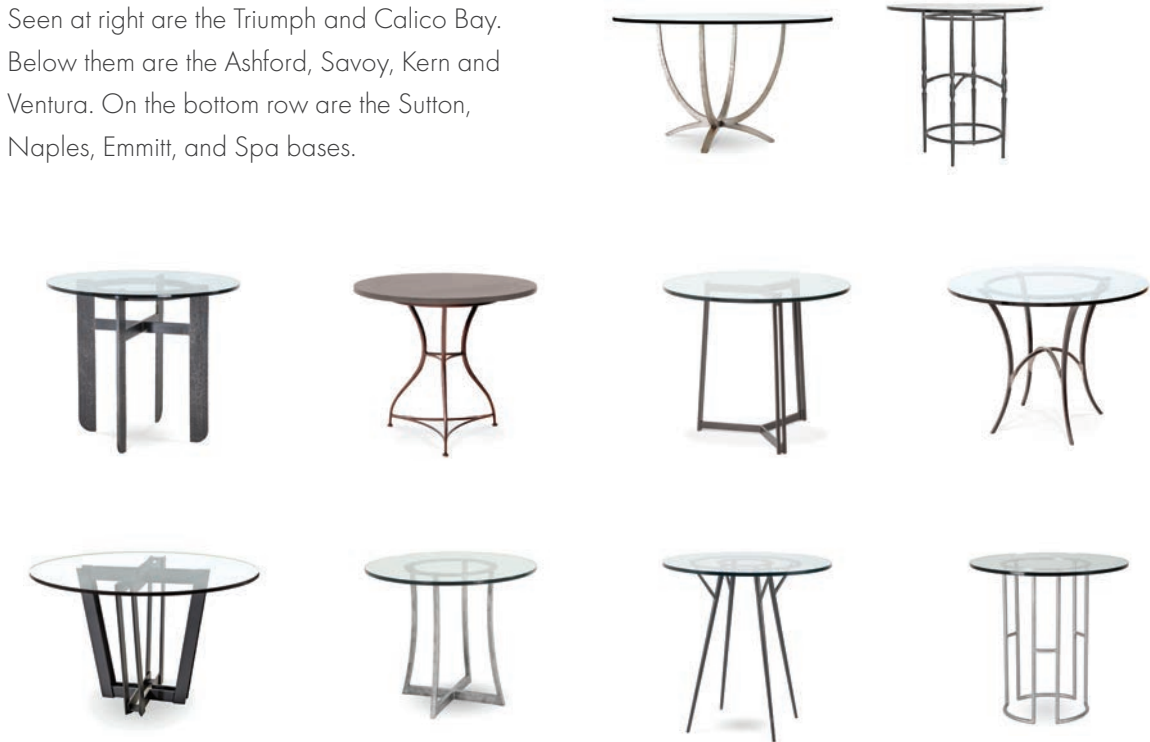
The Casual Dining Program offers ten different base styles, each available in dining, counter, and bar heights. They are available with either maple or glass tops. Dining height table tops range from 36 to 60 inches in diameter, while counter and bar height tables tops are available in 36, 42, and 48-inch diameters.



Ashford Counter Height Table
 T13C Dia 42 x h 35¾
 Shown in Burnished Iron finish (15)
 Glass top (GL)

The Styles

Seen at right are the Triumph and Calico Bay. Below them are the Ashford, Savoy, Kern and Ventura. On the bottom row are the Sutton, Naples, Emmitt, and Spa bases.



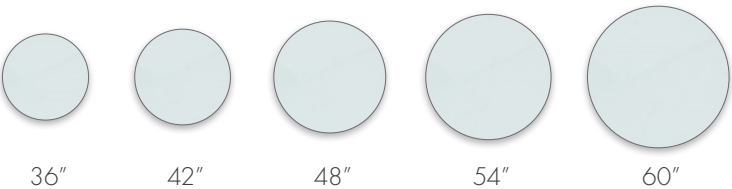
Base Heights

All styles are available in dining height (30"), counter height (36") and bar height (40").



Top sizes

The tops for the counter and bar height bases are available in 36", 42" and 48" diameters. Dining table bases are also available in 54" and 60" diameters. Tops are available in both Glass and Maple.





Biscayne 72" Dining Table

T791 w 72 x d 43½ x h 30

Shown in Gunmetal finish (79)

Clear Coat on Maple top with
Natural Distressing (CC-M-ND)

Also available

T792 Biscayne 96" Dining Table

Astor Chairs

C915 w 17 x d 20 x h 33½

Shown in Charcoal finish (73)

Porcelain fabric cushion (F27)

Seat height is 19



Calico Bay Counter Height Table

T09C Dia 36 x h 35¾

Shown in Glazed Hudson finish (19)

Glass top (GL)

Also available

T09B Calico Bay Bar Height Table

T09D Calico Bay Dining Table

Calico Bay 26" Counterstool

C690 w 18¾ x d 24½ x h 38½

Shown in Glazed Hudson finish (19)

Flint fabric cushion (F32)

Seat height is 26

Also available

C691 Barstool 30"

Naples Dining Table

T14D Dia 36 x h 30

Shown in Black Nickel finish (39)

Glass top (GL)

Also available

T14B Naples Bar Height Table

T14C Naples Counter Height Table

Naples Dining Chairs

C674 w 17 x d 21 ¾ x h 32 ¾

Shown in Black Nickel finish (39)

Porcelain fabric cushion (F27)

Seat height is 20



Spa Counterstool 26"

C931 w 21 ½ x d 19¼ x h 34½

Shown in Brushed Silver finish (59)

Porcelain fabric cushion (F27)

Seat height is 26

Also available

C932 Spa Barstool 30"

Spa Counter Height Table

T15C Dia 36 x h 36

Shown in Brushed Silver finish (59)

Glass top (GL)

Also available

T15B Spa Bar Height Table

T15D Spa Dining Table

Greenbrier
LIFESTYLE
COLLECTION



Greenbrier
LIFESTYLE
COLLECTION

Ashford Counter Height Table

T13C Dia 42 x h 35¾

Shown in Burnished Iron finish (15)

Glass top (GL)

Also available

T13D Ashford Dining Table

T13B Ashford Bar Height Table

**Legacy 60" Round Dining Table**

T105 Dia 60 x h 29½

Shown in Charcoal finish (73)

Glass top (GL)

Also available

T113 Legacy 48" Round Dining Table



Sutton 72" Rectangular Dining Table

T734 w 72 x d 40 x h 30¼

Shown in Gunmetal finish (79)
Cashew on Live Edge Maple top with
Natural Distressing (CA-LEM-ND)

Also available
T735 Sutton 96" Rectangular Dining Table



Sutton Round Dining Table

T10D Dia 36 x h 29½

Shown in Textured Black finish (83)
Glass top (GL)

Also available
T10B Sutton Bar Height Table
T10C Sutton Counter Height Table

With the welding complete, a grinder prepares a Sutton Dining Table base for the paint line.



Savoy Dining Table

T03D Dia 36 x h 30¼
Shown in Oil-Rubbed Bronze finish (78)
Brentwood on Maple top with
Natural Distressing (B-M-ND)

Also available
T03B Savoy Bar Height Table
T03C Savoy Counter Height Table

Note: When purchased with a 48", 54", or
60" diameter top, the dining height table
base has four legs.



Kern Dining Table

T04D Dia 36 x h 29¾
Shown in Gunmetal finish (79)
Glass top (GL)

Also available
T04B Kern Bar Height Table
T04C Kern Counter Height Table



Ventura Dining Table

T01D Dia 36 x h 29¾
Shown in Antique Pewter finish (70)
Glass top (GL)

Also available
T01B Ventura Bar Height Table
T01C Ventura Counter Height Table

Ventura Dining Chair

C801 w 25½ x d 19 x h 32
Shown in Antique Pewter finish (70)
Bourbon leather cushion (L401)
Seat height is 18





Triumph Round Dining Table
T11D Dia 48 x h 29½
Shown in Argento Antico finish (31)
Glass top (GL)

Also available
T11B Triumph Round Bar Height Table
T11C Triumph Round Counter Height Table



Triumph 96" Rectangular Dining Table
T725 w 96 x d 40 x h 30¼
Shown in Brushed Silver finish (59)
Alabaster on Live-Edge Maple top with
Natural Distressing (AB-LEM-ND)

Also available
T724 Triumph 72" Rectangular Dining Table



Forgers use a jig while bending the leg of a Triumph Dining Table. Jigs ensure that bends are consistent which means we deliver a perfectly symmetrical and level product every time.

Drink Tables

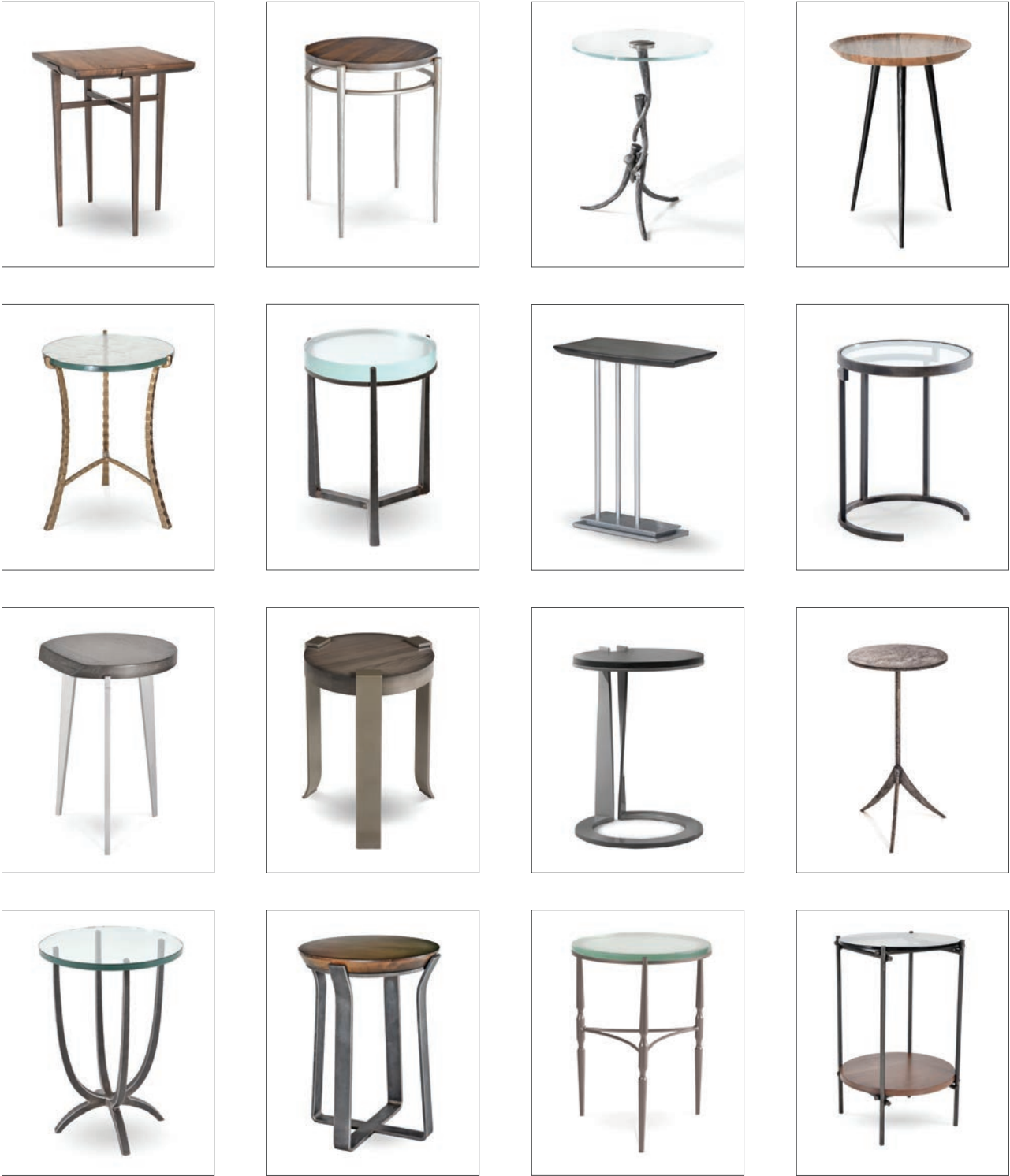
JARRETT BAY
Home

Hatteras Small Drink Table
7809 Dia 8½ x h 22
Shown in Burnished Iron (15)
Cast Glass top (GLC)



Hatteras Drink Table
7808 Dia 16 x h 22
Shown in Champagne finish (72)
Raven on Maple top with
Natural Distressing (R-M-ND)

With more than 40 drink tables in a wide variety of styles available,
there's something for every space in your house.



West End Drink Table

7328 w 8 x d 8 x h 23

Shown in Brushed Silver finish (59)
Clear Coat on Maple top with
Natural Distressing (CC-M-ND)



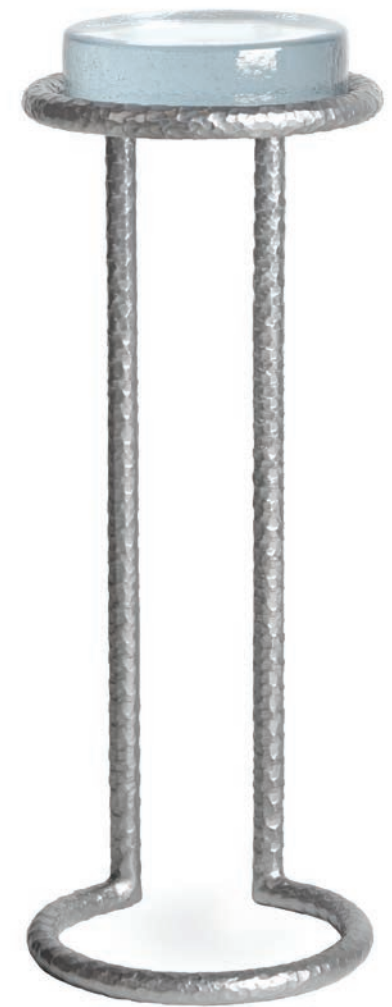


Spa Drink Table

7737 Dia 17¾ x h 22
Shown in Alchemy finish (77)
Riverside Glass top (GLR)

Spa Small Drink Table

7738 Dia 8¼ x h 23
Shown in Brushed Silver finish (59)
Cast Glass top (GLC)



Spa Small Drink Table

7738 Dia 8¼ x h 22½
Shown in Brushed Silver finish (59)
Raven on Maple top with
Natural Distressing (R-M-ND)



Beaufort Drink Table

6995 Dia 17 x h 22¼

Shown in Burnished Iron finish (15)
Brentwood on Maple with
Natural Distressing (B-M-ND)

Beaufort Bench

M690 w 60 x d 21½ x h 19

Shown in Oil-Rubbed Bronze finish (78)
Porcelain fabric cushion (F27)
Seat height is 19



JARRETT BAY
— Home —



Horizon Drink Table

6996 Dia 16 x h 22

Shown in Harvest finish (87)
Wheat on maple with
Natural Distressing (W-M-ND)



Calico Bay Drink Table

7995 Dia 17¾ x h 23

Shown in Gunmetal finish (79)
Riverside Glass top (GLR)



Camden Drink Table

6050 Dia 18 x h 22¼

Shown in Argento Antico finish (31)
Brentwood on Maple top with
Natural Distressing (B-M-ND)

the KATY SKELTON collection

Crawford Drink Table

6628 Dia 16 x h 22

Shown in Burnished Iron finish (15)
Glass top and a Clear Coat on
Walnut shelf with Natural Distressing
(CC-WA-ND-GL)



A member of our cutting crew removes steel rings from a band saw prior to them being welded. They will be used as top and shelf supports on drink tables, such as the Crawford Drink Table on the opposite page.



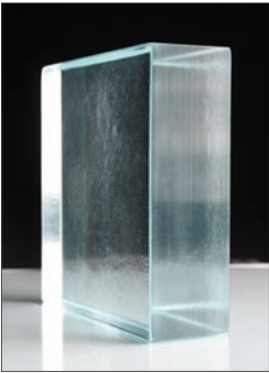
Cooper Drink Table
7426 Dia 18 x h 22
Shown in Antique Pewter finish (70)
Seascape Fusion Glass top (GL2S)



Cooper Drink Table
7426 Dia 18 x h 22
Shown in Burnished Iron finish (15)
Riverside Glass top (GLR)



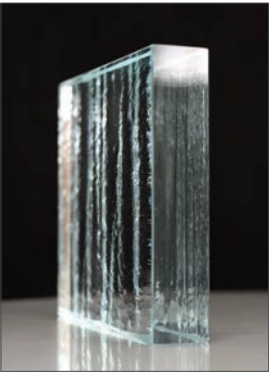
Cooper Drink Table
7426 Dia 18 x h 22
Shown in Harvest finish (87)
Glass top (GL)



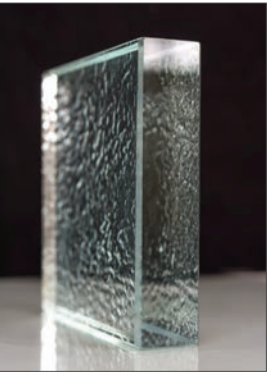
Minimal (GL2)



Seascape (GL2S)



Glacier (GL2G)



Pebble (GL2P)

Fusion Glass is available in four different bottom textures.

Manhattan Drink Table
7008 Dia 15¾ x h 22
Shown in Antique Pewter finish (70)
Clear Coat on Walnut top with
Natural Distressing and a Glass shelf
(CC-WA-ND-GL)



Fillmore Drink Table
7608 Dia 17 x h 22
Shown in Burnished Iron finish (15)
Glass top (GL)



Stiletto Drink Table
7412 Dia 13½ x h 22
Shown in Etched Silver finish (53)
Metal top.

Ashford Drink Table
7728 Dia 18¼ x h 21
Shown in Brushed Silver finish (59)
Glass top (GL)

Greenbrier
LIFESTYLE
COLLECTION





One of the ways we're able to ensure such consistently high quality is by doing as much in-house as possible, including wood finishing. Here one of our wood finishers sprays a protective, light-sheen lacquer onto maple drink table tops.

JARRETT BAY

— Home —

Biscayne Drink Table

7978 w 18 x d 10 x h 22

Shown in Brushed Silver finish (59)

Alpine on Maple top with Natural Distressing (AP-M-ND)





Collins Drink Table
6608 Dia 15 x h 22
Shown in Burnished Iron finish (15)
Bronze Glass top with a Clear Coat on
Walnut shelf with Natural Distressing
(GLB-CC-WA-ND)



Passage Drink Table
7438 w 14½ x d 19 x h 22
Shown in Antique Pewter finish (70)
Raven on Maple top with
Natural Distressing (R-M-ND)

Taylor Nesting Tables
6417 Large: Dia 17 x h 22¾
 Small: Dia 13 x h 19¾
Shown in Burnished Iron finish (15)
Brentwood on Maple tops with
Natural Distressing (B-M-ND)



Nashville Round Drink Table
7308 Dia 19 x h 22
Shown in Champagne finish (72)
Alpine on Maple top with
Natural Distressing (AP-M-ND)

SOUTHERN
REVIVAL



Greenbrier
LIFESTYLE
COLLECTION

Springhouse Drink Table
7708 w 16½ x d 16½ x h 22
Shown in Argento Antico finish (31)
Cashew on Maple top with
Natural Distressing (CA-M-ND)



A hand-paint specialist applies the finishing touches to a premium finish on an Omega Round End Table base. All our hand-painted finishes start with a highly durable, powder coat base.

Left to right:

Derby Drink Table

7450 Dia 7 x h 23

Shown in Charcoal finish (73)

Inset marble disk and marble base

Rose Drink Table

7452 Dia 7 x h 23

Shown in Charcoal finish (73)

Clear Coat on Walnut base with
Natural Distressing (CC-WA-ND)

Inset marble disk

Hampton Drink Table

7451 Dia 8 x h 23

Shown in Brushed Silver finish (59)

Inset marble disk





Jameson Drink Table
7490 Dia 16 x h 22
Shown in Charcoal finish (73)
Clear Coat on Maple top with
Natural Distressing (CC-M-ND)



Empire Drink Table
7404 w 15 x d 9 x h 22
Shown in Oil-Rubbed Bronze finish (78)
Glass top (GL)



Lewis Drink Table
7422 w 15 x d 11 ¼ x h 23
Shown in Oil-Rubbed Bronze finish (78)
Glass top (GL)

Linville Drink Table
6558 Dia 17 x h 22½
Shown in Gunmetal finish (79)
Cashew on Live Edge Maple top with
Natural Distressing (CA-LEM-ND)





The base of a Triumph Drink Table is made of eight, individually-forged, pieces of solid steel. Once forged, they are precision cut and then welded together.



Triumph Drink Table
6290 Dia 16 x h 23
Shown in Burnished Iron finish (15)
Glass top (GL)



Nash Round Drink Table
7203 Dia 15 x h 22
Shown in Antique Pewter finish (70)
Raven on Maple top with
Natural Distressing (R-M-ND)



Nash Rectangular Drink Table
7207 w 15 x d 10½ x h 22
Shown in Charcoal finish (73)
Alpine on Maple top with
Natural Distressing (AP-M-ND)



Roundabout Drink Table
7425 Dia 17 x h 25
Shown in Harvest finish (87)
Mirror top (GLM)



Lotus Drink Table
7427 Dia 14½ x h 22
Shown in Gunmetal finish (79)
Brentwood on Maple top with
Natural Distressing (B-M-ND)



Taylor Drink Table
6418 Dia 14¼ x 22
Shown in Harvest finish (87)
Brentwood on Maple top with
Natural Distressing (B-M-ND)

Tangle Drink Table
8004 Dia 18 x h 27¾
Shown in Burnished Iron finish (15)
Glass top (GL)



Metro Drink Table

7410 w 15¼ x d 10 x h 22¾
Shown in Burnished Iron finish (15)
Glass top (GL)



Omega Drink Table

7433 w 14¾ x d 14¾ x h 22
Shown in Marrone Antico finish (11)
Glass top (GL)



Quad Drink Table

7414 w 15 x d 10¼ x h 23¼
Shown in Oil-Rubbed Bronze finish (78)
Glass top (GL)

Cascade Drink Table

7403 Dia 18 x h 22
Shown in Harvest finish (87)
Riverside Glass top (GLR)





Jasper Drink Table
8005 Dia 8¼ x h 23
Shown in Burnished Iron finish (15)
Cast Glass top (GLC)



Winston Drink Table
T874 w 20½ x d 16½ x h 24
Shown in Argento Antico finish (31)
Glass top and shelf (GL)



Canton Drink Table
7407 w 17¼ x d 13¼ x h 25½
Shown in Argento Antico finish (31)
Glass top (GL)



Carolina Nesting Tables
7415 Large: Dia 17¼ x h 24
 Small: Dia 13¾ x h 20½
Shown in Brushed Silver finish (59)
Large table has a Riverside Glass top (GLR)
Small table has a Mirror top (GLM)

Occasional Tables

JARRETT BAY
Home



Hatteras Round Drink Table

7808 Dia 16 x h 22
Shown in Champagne finish (72)
Raven on Maple top with
Natural Distressing (R-M-ND)

Hatteras Rectangular Cocktail Table

7800 w 50 x d 31 x h 17
Shown in Oil Rubbed Bronze finish (78)
Glass top (GL)

Hatteras Rectangular End Table

7805 w 24 x d 20½ x h 24
Shown in Oil Rubbed Bronze finish (78)
Glass top with a Brentwood on Maple shelf
with Natural Distressing (B-M-ND-GL)



Hatteras Rectangular End Table

7805 w 24 x d 20½ x h 24

Shown in Oil-Rubbed Bronze finish (78)
Glass top with a Brentwood on Maple shelf
with Natural Distressing (B-M-ND-GL)



Hatteras Round End Table

7806 Dia 27 x h 24

Shown in Gunmetal finish (79)
Alabaster on Maple top with
Natural Distressing (AB-M-ND)



JARRETT BAY
— Home —

Hatteras Rectangular Cocktail Table

7800 w 50 x d 31 x h 17

Shown in Oil Rubbed Bronze finish (78)
Brentwood on Maple top with
Natural Distressing (B-M-ND)

Greenbrier
LIFESTYLE
COLLECTION



At left
Spa Round End Table
7736 Dia 26 x h 24
Shown in Brushed Silver finish (59)
Raven on Maple top with
Natural Distressing (R-M-ND)

At left
Spa Small Drink Table
7738 Dia 8 x h 23
Shown in Brushed Silver finish (59)
Cast Glass top (GLC)



Above
Spa 36" Round Cocktail Table
7731 Dia 38 1/4 x h 17
Shown in Black Nickel finish (39)
Raven on Maple top with
Natural Distressing (R-M-ND)

Also available
7732 Spa 42" Round Cocktail Table



West End Side Table

7326 w 25¾ x d 18¼ x h 23
Shown in Burnished Iron finish (15)
Clear Coat on Walnut top with
Natural Distressing (CC-WA-ND)

West End Cocktail Table

7320 w 50¼ x d 29¾ x h 16
Shown in Burnished Iron finish (15)
Clear Coat on Walnut top with
Natural Distressing (CC-WA-ND)





Ashford 42" Round Cocktail Table

7722 Dia 46¼ x h 17

Shown in Burnished Iron finish (15)

Brentwood on Maple top with

Natural Distressing (B-M-ND)

Also available

7721 Ashford 36" Round Cocktail Table

7723 Ashford 48" Round Cocktail Table

7724 Ashford 54" Round Cocktail Table

Greenbrier
LIFESTYLE
COLLECTION



Greenbrier
LIFESTYLE
COLLECTION

Ashford Round End Table

7726 Dia 26¾ x h 24

Shown in Burnished Iron finish (15)
Glass top (GL)




S O U T H E R N
R E V I V A L

Nashville 42" Round Cocktail Table

7302 Dia 44¾ x h 18

Shown in Burnished Iron finish (15)
Cashew on Maple top with
Natural Distressing (CA-M-ND)

Also available
7301 Nashville 36" Round Cocktail Table
7303 Nashville 48" Round Cocktail Table
7304 Nashville 54" Round Cocktail Table

Nashville Round End Table

7306 Dia 27 x h 24

Shown in Burnished Iron finish (15)
Wheat on Maple top with
Natural Distressing (W-M-ND)



Manhattan End Table

7003 Dia 26¼ x h 24

Shown in Gunmetal finish (79)
Clear Coat on Maple top and
shelf with Natural Distressing
(CC-M-ND)



Above

Manhattan Cocktail Table

7000 w 51 x d 26¼ x h 17

Shown in Burnished Iron finish (15)
Clear Coat on Walnut top with
Natural Distressing and a Bronze
Glass shelf (CC-WA-ND-GLB)



Left

Shown in Burnished Iron finish (15)
Clear Coat on Walnut top and shelf with
Natural Distressing (CC-WA-ND)



Above
Biscayne Cocktail Table
7970 w 50 x d 28 x h 17
Shown in Charcoal finish (73)
Brentwood on Maple top with
Natural Distressing (B-M-ND)

Left
Shown in Brushed Silver finish (59)
Brentwood on Maple top with
Natural Distressing (B-M-ND)



JARRETT BAY
— Home —

Biscayne End Table
7973 w 24 x d 18 x h 24
Shown in Charcoal finish (73)
Clear Coat on Walnut top with
Natural Distressing (CC-WA-ND)



Above
Cooper Round End Table
6034 Dia 26 x h 24
Shown in Brushed Silver finish (59)
Brentwood on Maple top with
Natural Distressing (B-M-ND)

At left
Custom Nesting Cooper Cocktail, End & Drink Tables
Shown in Oil-Rubbed Bronze (78) and Charcoal (73) finishes
Seascape Fusion Glass tops (GL2S)



After doing the majority of the shaping and texturing using a power hammer, a forger puts the final touches on a Cooper Cocktail Table leg the old-fashioned way.



Cooper 42" Round Cocktail Table

6033 Dia 44 x h 19
Shown in Burnished Iron finish (15)
Saddle on Maple top with
Natural Distressing (S-M-ND)

Also available
6035 Cooper 36" Round Cocktail Table
6025 Cooper 54" Round Cocktail Table



Cooper 42" Square Cocktail Table

6133 w 44 x d 42 x h 19

Shown in Burnished Iron finish (15)
Cashew on Maple top with Natural Distressing
and Facet Glass inlay (CA-M-ND-GLF)

Also available
6020 Cooper 54" Square Cocktail Table



Fontana Cocktail Table

6130 w 42 x d 26 x h 17

Shown in Harvest finish (87)
Glass top (GL)

Fontana End Table

6129 w 26 x d 20 x h 24

Shown in Gunmetal finish (79)
Glass top (GL)



Cooper Rectangular Cocktail Table

6124 w 50 x d 30 x h 19

Shown in Burnished Iron finish (15)
Clear Coat on Maple top with
Natural Distressing (CC-M-ND)



Cooper Square End Table

6123 w 24 x d 26 x h 24

Shown in Antique Pewter finish (70)
Clear Coat on Maple top with
Natural Distressing (CC-M-ND)





the **KATY SKELTON** collection

Occasional Tables



Crawford Cocktail Table

6620 w 52 $\frac{3}{4}$ x d 30 $\frac{3}{4}$ x h 20

Shown in Oil-Rubbed Bronze finish (78)

Glass top and shelf (GL)

Crawford End Table

6623 w 26 $\frac{3}{4}$ x d 20 $\frac{3}{4}$ x h 24

Shown in Gunmetal finish (79)

Glass top and a Clear Coat on
Walnut shelf with Natural Distressing
(CC-WA-ND-GL)



Fillmore 42" Round Cocktail Table

7602 Dia 42 x h 18
Shown in Charcoal finish (73)
Glass top (GL)

Also available
7601 Fillmore 36" Round Cocktail Table

Fillmore Round End Table

7603 Dia 24 x h 24
Shown in Burnished Iron finish (15)
Glass top (GL)



Springhouse End Table
7703 w 24¼ x d 24½ x h 24
Shown in Gunmetal finish (79)
Wheat on Maple top with
Natural Distressing (W-M-ND)



Springhouse Cocktail Table
7700 w 50½ x d 28½ x h 17
Shown in Charcoal finish (73)
Wheat on Maple top with
Natural Distressing (W-M-ND)



Springhouse End Table
7703 w 24½ x d 24½ x h 24
Shown in Charcoal finish (73)
Brentwood on Maple top with
Natural Distressing (B-M-ND)

JARRETT BAY
Home



Beaufort End Table

6992 Dia 25 x h 24

Shown in Gunmetal finish (79)
Raven on Maple top with
Natural Distressing (R-M-ND)

Beaufort 36" Round Cocktail Table

6990 Dia 37 x h 18

Shown in Burnished Iron finish (15)
Raven on Maple top with Natural Distressing
(R-M-ND)

Also available
6991 Beaufort 42" Round Cocktail Table



Triumph 48" Cocktail Table

6293 Dia 48 x h 19½

Shown in Brushed Silver finish (59)
Glass top (GL)

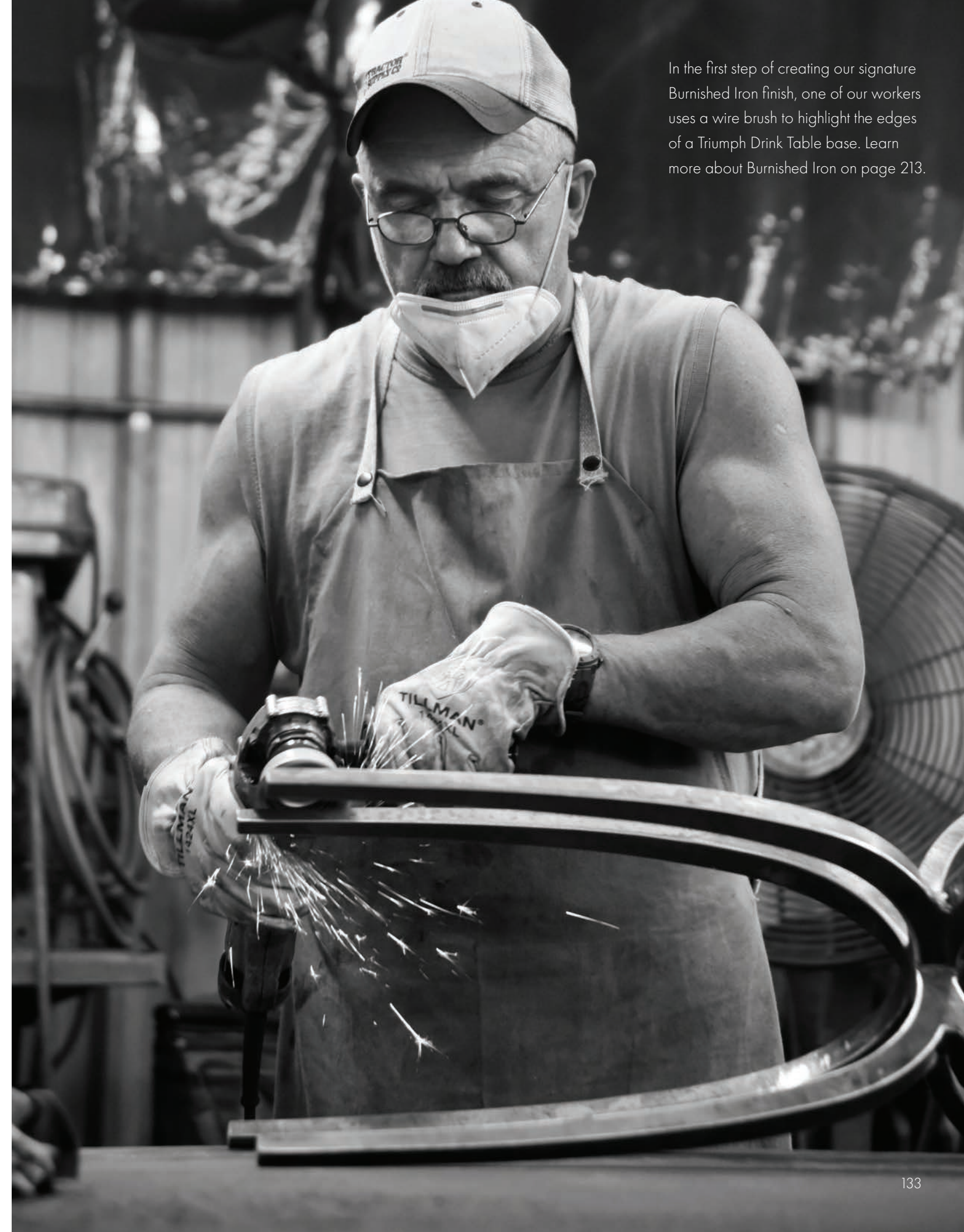
Also available
6292 Triumph 36" Cocktail Table



Triumph End Table

6291 Dia 30 x h 25½

Shown in Burnished Iron finish (15)
Glass top (GL)



In the first step of creating our signature Burnished Iron finish, one of our workers uses a wire brush to highlight the edges of a Triumph Drink Table base. Learn more about Burnished Iron on page 213.

Calico Bay 36" Cocktail Table

7997 Dia 37¾ x h 17

Shown in Brushed Silver finish (59)

Glass top (GL)

JARRETT BAY
— Home —



Calico Bay End Table

7996 Dia 25¾ x h 24

Shown in Burnished Iron finish (15)

Glass top (GL)



Calico Bay 36" Cocktail Table

7997 Dia 37¾ x h 17

Shown in Champagne finish (72)

Mica on Maple top with
Natural Distressing (MI-M-ND)

the KATY SKELTON collection



Collins Cocktail Table

6600 w 51 ¼ x d 30 ¼ x h 17
Shown in Alchemy finish (77)
Bronze glass top with a Clear Coat
on Walnut shelf with Natural Distressing
(GLB-CC-WA-ND)



Collins End Table

6603 w 25 ¼ x d 20 ¼ x h 24
Shown in Charcoal finish (73)
Bronze glass top and shelf (GLB)



Collins Cocktail Table

6600 w 51 ¼ x d 30 ¼ x h 17
Shown in Champagne finish (72)
Bronze glass top with a Clear Coat
on Walnut shelf with Natural Distressing
(GLB-CC-WA-ND)



Every top that comes in from our wood supplier gets a final sanding before it is stained and lacquered at our factory — yet another step that ensures the absolute best in quality control. A vacuum sanding table is used to minimize dust.



Collins Nightstand
6610 w 25¼ x d 20½ x h 26
Shown in Charcoal finish (73)
Brentwood on Maple drawer and shelf
with Natural Distressing (B-M-ND)



the KATY SKELTON collection



Omega Square End Table
7513 w 20¾ x d 20¾ x h 24
Shown in Marrone Antico finish (11)
Glass top (GL)



Omega Round End Table
7514 Dia 27 x h 24
Shown in Marrone Antico finish (11)
Glass top (GL)



Omega Rectangular Cocktail Table
7516 w 53 x d 30½ x h 19½
Shown in Marrone Antico finish (11)
Glass top (GL)



Above and at right
Winston Rectangular Cocktail Table

T870 w 54 x d 42 x h 20¼
Shown in Argento Antico finish (31)
Glass top (GL) and a Saddle on Maple shelf
with Natural Distressing (S-M-ND).



Winston End Table

T872 w 30 x d 24 x h 26¼
Shown in Argento Antico finish (31)
Glass top (GL) and a Saddle on Maple
shelf with Natural Distressing (S-M-ND).



Camden Round Cocktail Table

6052 Dia 38 x h 18

Shown in Gunmetal finish (79)

Brentwood on Maple top with
Natural Distressing (B-M-ND)

Also available

6054 Camden Rectangular Cocktail Table



Camden Square End Table

6055 w 25³/₄ x d 25³/₄ x h 24

Shown in Charcoal finish (73)

Glass top (GL)



Camden Round End Table

6051 Dia 26 x h 24

Shown in Burnished Iron finish (15)

Glass top (GL)





Taylor Round End Table

6414 Dia 24¾ x h 24
Shown in Harvest finish (87)
Glass top (GL)



Taylor Square End Table

6416 w 24¾ x d 24¾ x h 24¼
Shown in Antique Pewter finish (70)
Wheat on Maple top with
Natural Distressing (W-M-ND)



Taylor Round Cocktail Table

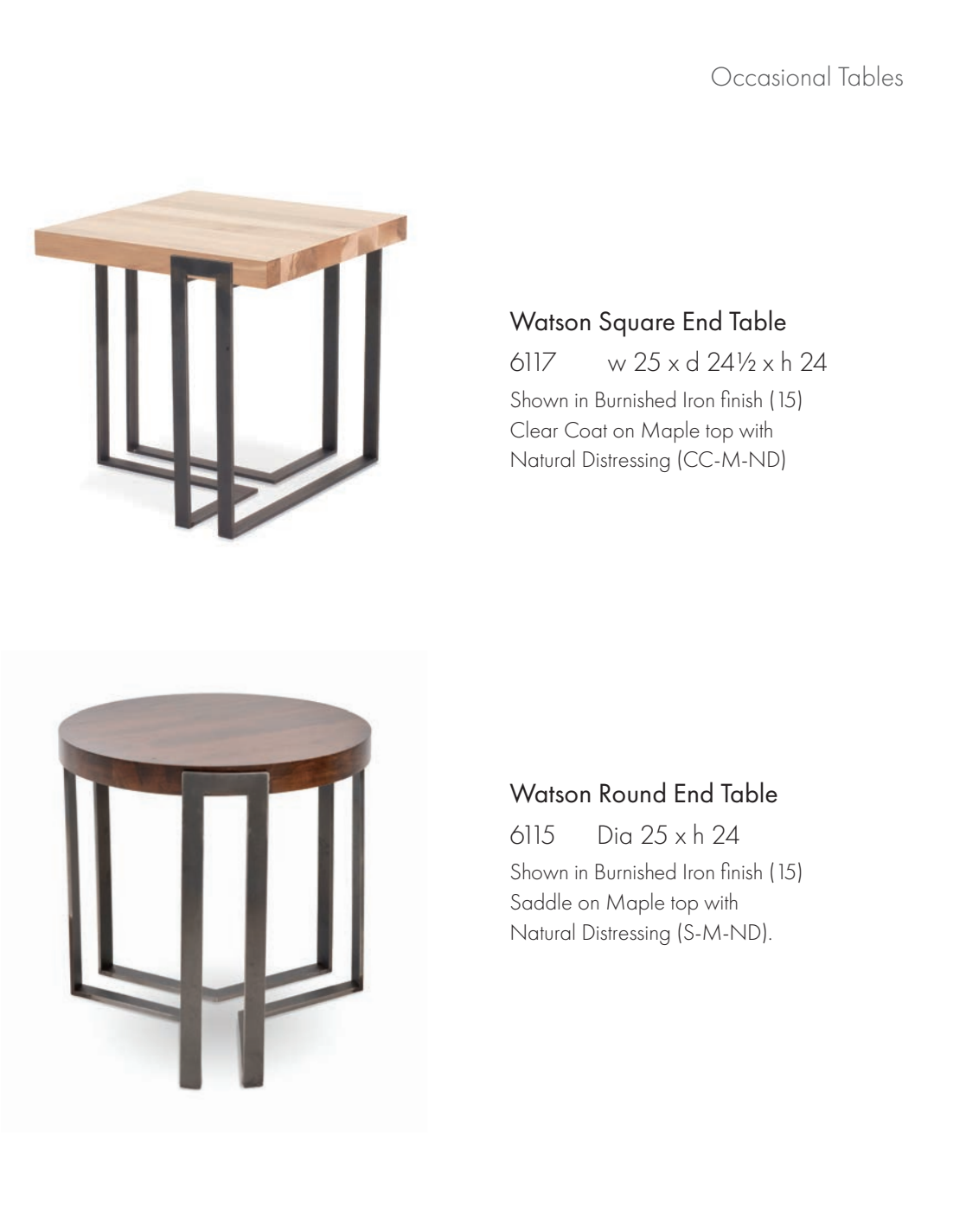
6410 Dia 36¾ x h 18¼
Shown in Antique Pewter finish (70)
Wheat on Maple top with
Natural Distressing (W-M-ND)

Also available
6412 Taylor Rectangular Cocktail Table



Watson Rectangular Cocktail Table

6118 w 50½ x d 29 x h 19
Shown in Burnished Iron finish (15)
Saddle on Maple top with
Natural Distressing (S-M-ND)



Watson Square End Table

6117 w 25 x d 24½ x h 24
Shown in Burnished Iron finish (15)
Clear Coat on Maple top with
Natural Distressing (CC-M-ND)

Watson Round End Table

6115 Dia 25 x h 24
Shown in Burnished Iron finish (15)
Saddle on Maple top with
Natural Distressing (S-M-ND).



Watson 42" Square Cocktail Table

6114 w 43 x d 43 x h 19
Shown in Burnished Iron finish (15)
Saddle on Maple top with
Natural Distressing (S-M-ND)

Also available
6016 Watson 54" Square Cocktail Table

Watson 42" Round Cocktail Table

6014 Dia 43 x h 19
Shown in Burnished Iron (15)
Clear Coat on Maple top with
Natural Distressing (CC-M-ND)

Also available
6017 Watson 54" Round Cocktail Table
(The 54" model has four sets of legs)





Roundabout Cocktail Table

6205 Dia 35 x h 18½
Shown in Oil-Rubbed Bronze finish (78)
Glass top (GL)

Roundabout End Table

6204 Dia 21 x h 25
Shown in Oil-Rubbed Bronze finish (78)
Glass top and shelf (GL)

At right

Ellipse End Table

6103 w 25 x d 19 x h 25
Shown in Oil-Rubbed Bronze finish (78)
Glass top and shelf (GL)

At left

Ellipse Cocktail Table

6104 w 43 x d 27 x h 18½
Shown in Antique Pewter finish (70)
Glass top and shelf (GL)





Linville Cocktail Table
6550 w 51 ¼ x d 28 x h 18
Shown in Gunmetal finish (79)
Raven on Live-Edged Maple top with
Natural Distressing (R-LEM-ND)



Linville End Table
6553 w 25 ¼ x d 20 x h 23 ¾
Shown in Burnished Iron (15)
Cashew on Live Edge Maple top with
Natural Distressing (CA-LEM-ND)



In preparation for painting, every frame passes through a washer, and then compressed air is used to blow off any residual water droplets. This is followed by a trip through a drying oven to ensure that every piece is completely dry prior to being powder coated.



Lotus Square Cocktail Table

6322 w 36¾ x d 36¾ x h 18
Shown in Antique Pewter finish (70)
Glass top (GL)

Lotus Square End Table

6321 w 24¾ x d 24¾ x h 25
Shown in Antique Pewter finish (70)
Glass top (GL)



Lotus Round End Table

6320 Dia 24¾ x h 25
Shown in Charcoal finish (73)
Cashew on Maple top with
Natural Distressing (CA-M-ND)



Lotus Round Cocktail Table

6315 Dia 36¾ x h 18
Shown in Oil-Rubbed Bronze finish (78)
Glass top (GL)

Barstools & Counterstools



Amalie Counterstool 26"

C684 Dia 18¾ x h 26

Shown in Burnished Iron finish (15)

Porcelain fabric cushion (F27)

Seat height is 26

Also available

C685 Amalie Barstool 30"





Emmitt Counterstool 26"

C941 w 18¼ x d 21½ x h 33½

Shown in Burnished Iron finish (15)

Rosewood leather cushion (L413)

Seat height is 26

Also available

C942 Emmitt Barstool 30"

Emmitt Counter Height Table

T16C Dia 36 x h 36

Shown in Burnished Iron finish (15)

Glass top (GL)

Also available

T16B Emmitt Bar Height Table

T16D Emmitt Dining Table



Ventura Swivel Counterstool 26"

C802 w 25½ x d 20 x h 38

Shown in Brushed Silver finish (59)

Powder fabric cushion (F33)

Seat height is 26

Also available

C803 Ventura Swivel Barstool 30"



Spa Counterstool 26"
C931 w 21 1/2 x d 19 1/4 x h 34 1/2
Shown in Brushed Silver finish (59)
with a Clear Coat on Maple backrest
Powder fabric cushion (F33)
Seat height is 26

Also available
C932 Spa Barstool 30"



Spa Backless Counterstool 26"
C933 Dia 17 3/4 x h 26
Shown in Burnished Iron finish (15)
Porcelain fabric cushion (F27)
Seat height is 26

Also available
C934 Spa Backless Barstool 30"

Spa Gathering Console
7743 w 74 1/4 x d 20 1/4 x h 36
Shown in Brushed Silver finish (59)
Brentwood on Maple top with
Natural Distressing (B-M-ND)

Spa Backless Counterstools 26"
C933 Dia 17 3/4 x h 26
Shown in Burnished Iron finish (15)
Porcelain fabric cushion (F27)
Seat height is 26

Also available
C934 Spa Backless Barstool 30"





A forger creates the signature indentation that makes the leg of the Calico Bay Collection so distinctive.

At right
Calico Bay 26" Counterstools
C690 w 18¾ x d 24½ x h 38½
Shown in Burnished Iron finish (15)
Flint fabric cushion (F32)
Seat height is 26

Also available
C691 Calico Bay Barstool 30"



JARRETT BAY
— Home —



Victoria Counterstool 26"

C956 w 16 x d 14 x h 26

Shown in Gunmetal finish (79)

Porcelain fabric cushion (F27)

Seat height is 26

Also available

C957 Victoria Barstool 30"



Clement Counterstool 26"

C961 w 16 x d 14 x h 26

Shown in Gunmetal finish (79)

Ivory Snow leather cushion (L407)

Seat height is 26

Also available

C962 Clement Barstool 30"

Naples Counterstool 26"

C966 w 16 x d 21 1/4 x h 36 1/2

Shown in Oil-Rubbed Bronze finish (78)

Porcelain fabric cushion (F27)

Seat height is 26 3/4

Also available

C967 Naples Barstool 30"



Parsons Metal Seat Counterstool 26"

C978 w 16½ x d 14½ x h 26

Shown in Argento Antico finish (31)

Metal seat

Height to the center of seat is 24¼



Parsons Metal Seat Barstool 30"

C979 w 16½ x d 14½ x h 30

Shown in Charcoal finish (73)

Metal seat

Height to the center of seat is 28¼

Also available

C978 Parsons Metal Seat Counterstool

Height to center of seat is 24¼



Parsons Wood Seat Barstool 30"

C981 w 16½ x d 14½ x h 30

Shown in Charcoal finish (73)

Alpine on Maple seat with

Natural Distressing (AP-M-ND)

Height to the center of seat is 28¾

Also available

C980 Parsons Wood Seat Counterstool 26"

Height to the center of seat is 24¾



Astor Counterstool 26"

C946 w 16 x d 17¾ x h 36

Shown in Charcoal finish (73)

Rosewood leather cushion (L413)

Seat height 26

Also available

C947 Astor Barstool 30"



Barkley Swivel Counterstool 26"
C761 w 17½ x d 24 x h 41
Shown in Antique Pewter finish (70)
Porcelain fabric cushion (F27)
Seat height is 26

Also available
C762 Barkley Swivel Barstool 30"



Vero Counterstool 26"
C661 w 18¾ x d 24½ x h 38½
Shown in Gunmetal finish (79)
Slate Blue fabric cushion (F29)
Seat height is 26

Also available
C660 Vero Barstool 30"



Echo Swivel Barstool 30"
C860 w 17 x d 19 x h 38
Shown in Textured Black (83)
Bourbon leather cushion (L401)
Seat height is 30

Also available
C861 Echo Swivel Counterstool 26"



Sawyer Counterstool 26"
C665 w 20¼ x d 25½ x h 38½
Shown in Gunmetal finish (79)
Flax fabric cushion (F28)
Seat height is 26

Also available
C664 Sawyer Barstool 30"



Aries Swivel Counterstool 26"

C864 Dia 19 x h 34½
Shown in Gunmetal finish (79)
Onyx leather cushion (L411)
Seat height is 26

Also available
C865 Aries Swivel Barstool 30"



Fresno Swivel Barstool 30"

C442 w 16 x d 20 x h 41
Shown in Brushed Silver finish (59)
Raven on Maple seat with
Natural Distressing (R-M-ND)
Seat height is 30

Also available
C441 Fresno Swivel Counterstool 26"



Aries Backless Swivel Counterstool 26"

C862 Dia 19 x h 26
Shown in Burnished Iron finish (15)
Ivory Snow leather cushion (L407)
Seat height is 26

Also available
C863 Aries Backless Swivel Barstool 30"



Aries Swivel Barstool 30"

C865 Dia 19 x h 38½
Shown in Gunmetal finish (79)
Onyx leather cushion (L411)
Seat height is 30

Also available
C864 Aries Swivel Counterstool 26"

Benches & Ottomans



At left

Springhouse Ottoman

M655 w 23 x d 15¼ x h 14

Shown in Burnished Iron finish (15)

Onyx leather cushion (L411)

Seat height is 14

Ashford Bench

M710 w 46¾ x d 16¾ x h 18

Shown in Burnished Iron finish (15)

Onyx leather cushion (L411)

Seat height is 18

At left

Springhouse Lounge Chair

C654 w 32½ x d 34 x h 28

Shown in Burnished Iron finish (15)

Onyx leather cushion (L411)

Seat height is 17 (front of cushion)

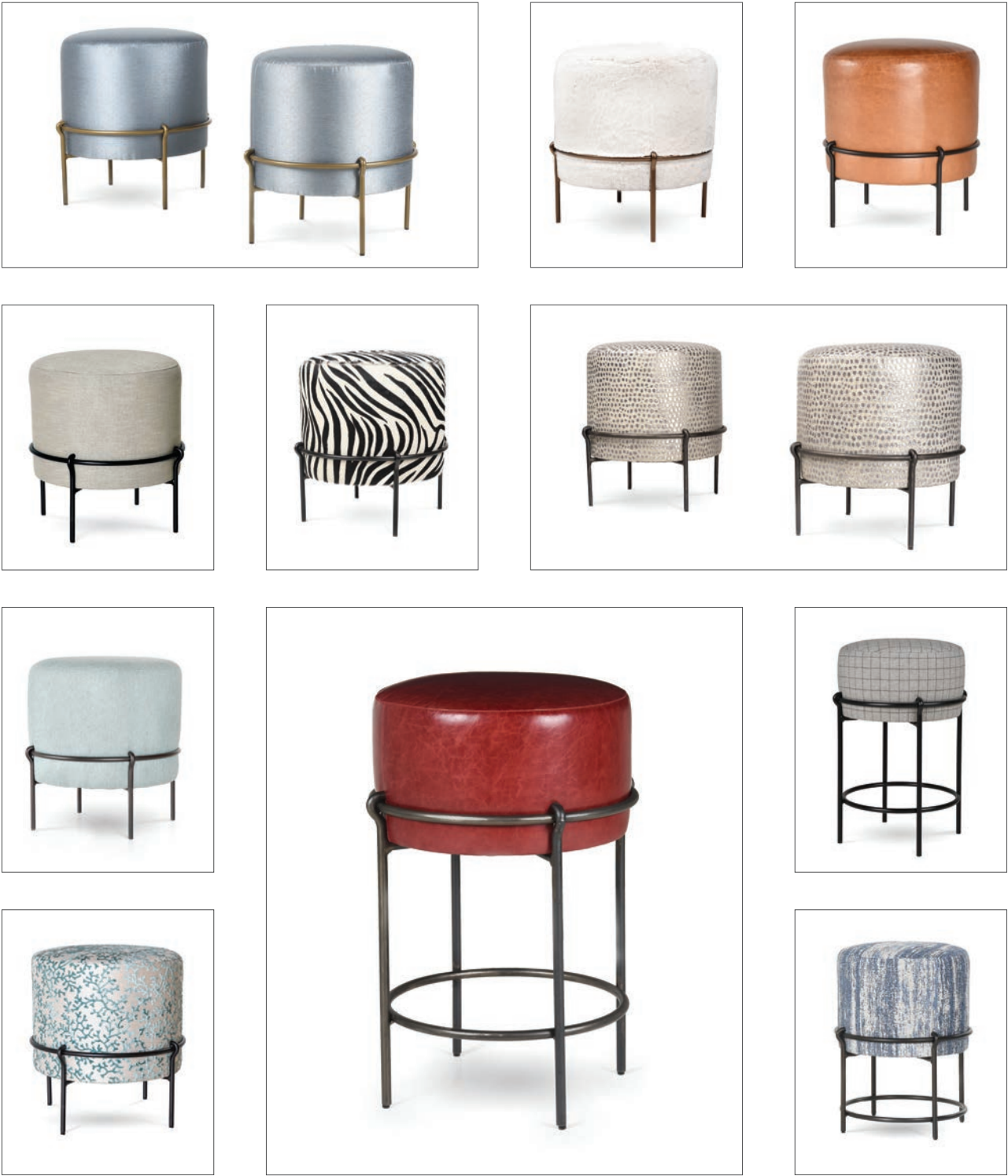
Greenbrier
LIFESTYLE
COLLECTION



Collins Drink Table
 6608 Dia 15 x h 22
 Shown in Burnished Iron finish (15)
 Bronze glass top with a Clear Coat on
 Walnut shelf with Natural Distressing
 (GLB-CC-WA-ND)

Amalie Round Ottoman
 M342 Dia 18 x h 18
 Shown in Charcoal finish (73)
 Horizon fabric cushion (F39)
 Seat height 18

the **KATY SKELTON** collection



The Many Faces of Amalie

Custom and COM versions of this iconic ottoman and barstool.



Emmitt Ottoman
M651 w 24½ x d 15½ x h 14
Shown in Charcoal finish (73)
Sterling leather cushion (L414)
Seat height 14

Emmitt Lounge Chair
C650 w 27¼ x d 34 x h 27¾
Shown in Charcoal finish (73)
Naturally Distressed Brentwood on Maple seat
Sterling leather cushion (B-M-ND-L414)
Seat height is 16¼ (front of cushion)

Belvedere Bench
M340 w 60¼ x d 21½ x h 24
Shown in Charcoal finish (73)
Slate Blue fabric cushion (F29)
Seat height 18



Belvedere Bench
M340 w 60¼ x d 21½ x h 24
Shown in Charcoal finish (73)
Porcelain fabric cushion (F27)
Seat height 18

Emmitt Ottoman
M651 w 24½ x d 15½ x h 14
Shown in Oil-Rubbed Bronze finish (78)
Ivory Snow leather cushion (L407)
Seat height 14





Beaufort Bench

M690 w 60 x d 21 ½ x h 19

Shown in Oil-Rubbed Bronze finish (78)

Butter Rum leather cushion (L402)

Seat height is 19

Beaufort Bench

M690 w 60 x d 21 ½ x h 19

Shown in Oil-Rubbed Bronze finish (78)

Porcelain fabric cushion (F27)

Seat height is 19



Talmadge 46" Bench
M222 w 46 x d 16 x h 19
Shown in Burnished Iron finish (15)
Onyx leather cushion (L411)
Seat height 19



Talmadge Small Bench
M234 w 23 x d 14 x h 19
Shown in Harvest finish (87)
Sterling leather cushion (L414)
Seat height 19



Legacy 60" Bench
M216 w 60 x d 16 x h 19
Shown in Burnished Iron finish (15)
Bourbon leather cushion (L401)
Seat height 19

Also available
M214 Legacy 46" Bench



Prague 46" Bench
M301 w 46 x d 16 x h 19
Shown in Burnished Iron finish (15)
Bourbon leather cushion (L401)
Seat height 19



Prague Small Bench
M302 w 23 x d 14 x h 19
Shown in Burnished Iron finish (15)
Terra leather cushion (L415)
Seat height 19



Warehouse Small Bench
M231 w 23 x d 14 x h 19
Shown in Burnished Iron (15)
Ivory Snow leather cushion (L407)
Seat height 19



Monarch Small Bench
M232 w 23 x d 14 x h 19
Shown in Burnished Iron finish (15)
Sterling leather cushion (L414)
Seat height 19



Bradford Ottoman
M223 Dia. 44 x h 19
Shown in Burnished Iron finish (15)
Pearlescent leather cushion (L412)
Seat height 19



Monarch 60" Bench
M212 w 60 x d 20 x h 19½
Shown in Burnished Iron finish (15)
Sterling leather cushion (L414)
Seat height 19½

Chairs



Springhouse Lounge Chair

C654 w 32½ x d 34 x h 28

Shown in Burnished Iron finish (15)

Onyx leather cushion (L411)

Seat height is 17 (Front of cushion)

Springhouse Ottoman

M655 w 23 x d 15¼ x h 14

Shown in Burnished Iron finish (15)

Onyx leather cushion (L411)

Seat height is 14

Greenbrier
LIFESTYLE
COLLECTION

Springhouse Lounge Chair

C654 w 32½ x d 34 x h 28

Shown in Burnished Iron finish (15)

Sterling leather cushion (L414)

Seat height is 17 (Front of cushion)



Springhouse Sofa

C656 w 72 x d 35¼ x h 28

Shown in Gunmetal finish (79)

Galaxy leather cushion (L405)

Seat height is 17 (front of cushion)



Emmitt Lounge Chair

C650 w 27¼ x d 34 x h 27¼
Shown in Charcoal finish (73)
Naturally Distressed Brentwood on Maple seat
Sterling leather cushion (B-M-ND-L414)
Seat height is 16¼ (front of cushion)

Emmitt Small Ottoman

M651 w 24½ x d 15½ x h 14
Shown in Charcoal finish (73)
Sterling leather cushion (L414)
Seat height 14



Emmitt Dining Chair

C940 w 17½ x d 19¼ x h 25½
Shown in Charcoal finish (73)
Rosewood leather cushion (L413)
Seat height is 18

Greenbrier
LIFESTYLE
COLLECTION

Spa Lounge Chair

C655 w 32 x d 33¾ x h 27¼
Shown in Harvest finish (87)
Ivory Snow leather cushion (L407)
Seat height is 16¼ (front of cushion)

Spa Small Drink Table

7738 Dia 8 x h 23
Shown in Brushed Silver finish (59)
Cast Glass top (GLC)



A cushion is attached to the frame of a Naples Barstool in the assembly area. Like nearly all of our vendors, our upholsterer is located within 100 miles of our factory, ensuring reliable supply with as minimal environmental impact as possible.



Naples Dining Chair

C674 w 17 x d 21 3/4 x h 32 3/4

Shown in Black Nickel finish (39)

Powder fabric cushion (F33)

Seat height is 19



Spa Dining Chair

C930 w 21 1/2 x d 19 1/4 x h 27 1/2

Shown in Burnished Iron finish (15)

Porcelain fabric cushion with a
Clear Coat on Maple backrest
(CC-M-ND-F27)

Seat height is 18



JARRETT BAY
— Home —

Calico Bay Dining Chair
C692 w 20 x d 26½ x h 36½
Shown in Marrone Antico finish (11)
Flint fabric cushion (F32)
Seat height is 20



Sawyer Dining Chair
C672 w 22 x d 27½ x h 36½
Shown in Burnished Iron finish (15)
Porcelain fabric cushion (F27)
Seat height is 20



Fresno Chair
C440 w 17½ x d 22 x h 34
Shown in Burnished Iron finish (15)
Brentwood on Maple seat with
Natural Distressing (B-M-ND)
Seat height is 20



Ventura Dining Chairs
C801 w 25½ x d 19 x h 32
Shown in Antique Pewter (70)
Rosewood leather cushion (L413)
Seat height is 18



Astor Side Chairs

C915 w 17 x d 20 x h 33½

Shown in Charcoal finish (73)

Porcelain fabric cushion (F27)

Seat height is 19

Biscayne 72" Dining Table

T791 w 72 x d 43½ x h 30

Shown in Gunmetal finish (79)

Clear Coat on Maple top with

Natural Distressing (CC-M-ND)

Also available

T792 Biscayne 96" Dining Table



Astor Side Chair

C915 w 17 x d 20 x h 33½

Shown in Argento Antico finish (31)

Pearlescent leather cushion (L412)

Seat height is 19



Barkley Chair

C765 w 20½ x d 21 x h 39

Shown in Argento Antico finish (31)

Porcelain fabric cushion (F27)

Seat height is 18



Vero Dining Chairs

C670 w 20 x d 26½ x h 36½

Shown in Charcoal finish (73)

Granite leather cushion (L406)

Seat height is 20

At left

Custom Vero Dining Chairs

w 20 x d 26½ x h 36½

Shown in Alchemy finish (77)

Custom fabric cushion

Seat height is 20

Étagères

Hatteras Étagères

8230 w 36¼ x d 16½ x h 86

Shown in Burnished Iron finish (15)

Bottom two shelves are Cashew on Maple with Natural Distressing. Top three shelves are Glass (CA-M-ND-GL)

Hatteras 70" Console

7807 w 70 x d 16½ x h 34

Shown in Burnished Iron finish (15)

Cashew on Maple top and shelf with Natural Distressing (CA-M-ND)

Hatteras Rectangular Cocktail Table

7800 w 50 x d 31 x h 17

Shown in Oil Rubbed Bronze finish (78)

Brentwood on Maple top with Natural Distressing (B-M-ND)

JARRETT BAY
Home





Greenbrier
LIFESTYLE
COLLECTION

Spa Entertainment Console
7742 w 70¼ x d 16¼ x h 33¾
Shown in Burnished Iron finish (15)
Brentwood on Maple top and shelf
with Natural Distressing (B-M-ND)

Spa Étagères
8240 w 36¼ x d 16¼ x h 86¾
Shown in Burnished Iron finish (15)
Bottom two shelves are Brentwood on Maple
with Natural Distressing. Top three shelves
are Glass (B-M-ND-GL)



Springhouse Étagère

8210 w 40 x d 18¼ x h 74

Shown in Champagne finish (72)
Bottom two shelves are Raven on Maple
with Natural Distressing. Top three
shelves are Glass (R-M-ND-GL)

Fillmore Étagère

8220 w 38½ x d 17 x h 74

Shown in Charcoal finish (73)
Glass shelves (GL)





Collins Étagère
8200 w 37½ x d 16¼ x h 74
Shown in Alchemy finish (77)
Glass shelves (GL)

Collins Storage Étagère
8201 w 37½ x d 16¼ x h 74
Shown in Champagne finish (72)
Three glass shelves and a Raven on
Maple storage cabinet with
Natural Distressing (R-M-ND)



the KATY SKELTON collection

Bedroom



Collins Storage Console

6611 w 55½ x d 12¼ x h 32

Shown in Champagne finish (72)
Brentwood on Maple drawer with
Natural Distressing and a Bronze
Glass shelf (B-M-ND-GLB)



Collins Nightstand

6610 w 25¼ x d 20½ x h 26

Shown in Charcoal finish (73)
Brentwood on Maple drawer and shelf
with Natural Distressing (B-M-ND)

Collins Canopy Bed

9182 Queen w 64½ x d 85¾ x h 88

9183 King w 80½ x d 85¾ x h 88

Mattress support height is 9½

Queen bed shown in Charcoal (73)
Alpine on Maple headboard with
Natural Distressing (AP-M-ND)



Omega Bed

9160 Queen w 63½ x d 84½ x h 78

9161 King w 79½ x d 84½ x h 78

Mattress support height is 11 ¼

Queen bed shown in Burnished Iron finish (15)

Flax fabric headboard (F28)



Camden Round End Table

6051 Dia 26 x h 24
Shown in Burnished Iron finish (15)
Glass top (GL)

Sloan Canopy Bed

9132 Queen w 64½ x d 85 x h 90
9133 King w 80½ x d 85 x h 90
Mattress support height is 8¾

Queen bed shown in Argento Antico finish (31)
Raven on Maple headboard with
Natural Distressing (R-M-ND)

Also available in a non-canopy version
9130 Sloan Queen Bed
9131 Sloan King Bed



Wilkes Bed

9140 Queen: w 61 x d 88 x h 48

9141 King: w 77 x d 88 x h 48

Platform height: 9

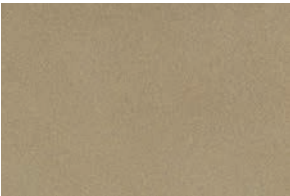
Queen bed shown in Charcoal finish (73)
Brentwood on Maple headboard with
Natural Distressing (B-M-ND)

Metal Finishes

Standard



Antique Pewter (70)



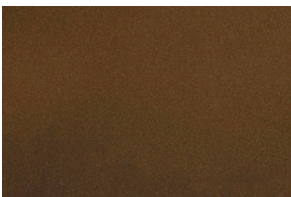
Champagne (72)



Charcoal (73)



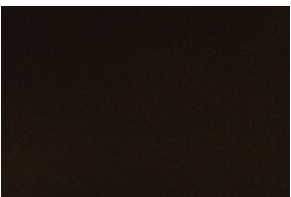
Alchemy (77)



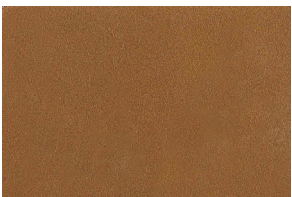
Oil-Rubbed Bronze (78)



Gunmetal (79)

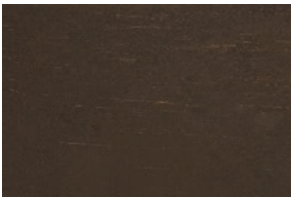


Textured Black (83)



Harvest (87)

Premium



Marrone Antico (11)



Burnished Iron (15)



Argento Antico (31)



Black Nickel (39)



Etched Silver (53)



Brushed Silver (59)

Finishes shown in this catalog may vary slightly from the actual finishes due to the nature of the printing process.

About Burnished Iron

Burnished Iron is a metal finish that is designed specifically to bring out the natural look of steel. It is achieved by first lightly grinding the edges of the steel frame, revealing a brighter steel under the dark surface. The frame is then powder coated with a translucent finish that protects the steel from corrosion, while still allowing the look of the raw steel to show through.

Scaling

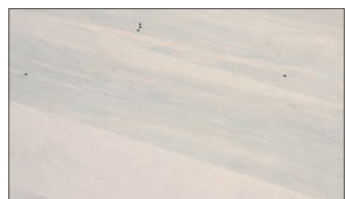
Scaling occurs when steel is heated in a forge. It is the oxidization of the metal's surface and can be seen as changes in the color and texture of the steel. It can be both seen and felt. Scaling is most obvious with our Burnished Iron finish but will be evident on any piece that has been forged.



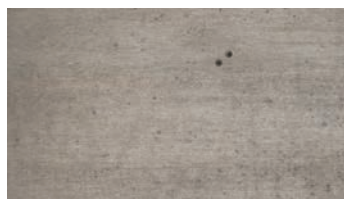
Triumph Drink Table
6290 Dia 16 x h 23
Shown in Burnished Iron finish (15)
Glass top (GL)

Wood Finishes & Distressing Options

Maple (M)



Alabaster (AB)



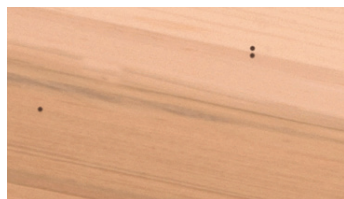
Alpine (AP)



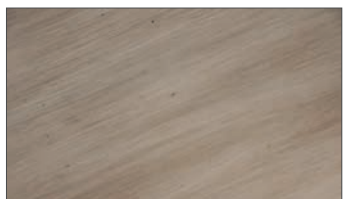
Brentwood (B)



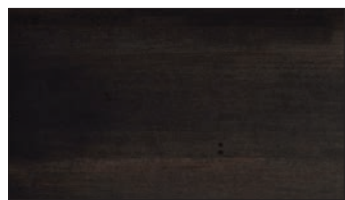
Cashew (CA)



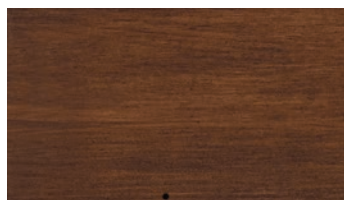
Clear Coat (CC)



Mica (MI)



Raven (R)

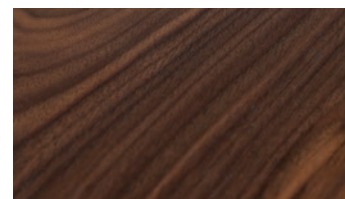


Saddle (S)



Wheat (W)

Walnut (WA)



Clear Coat on Walnut (CC)

* Walnut is available with a Clear Coat finish only.

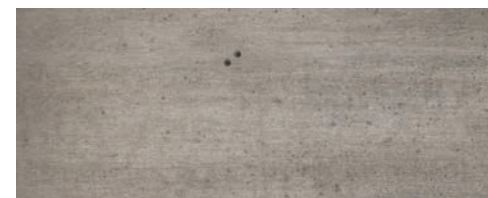
Please note that wood, as a natural product, has variations in both color and pattern that occur from top to top and even within single pieces of wood.

Colors may vary slightly from the real wood due to the nature of the printing process.



Also called Ambrosia Maple, Wormy Maple exhibits a beautiful, contrasting grain pattern with distinct markings and worm holes created by the Ambrosia beetle. Natural Distressing highlights these natural characteristics with no other artificial distressing added. The degree of contrast in the grain varies from top to top and is generally more evident on lighter finishes, especially Clear Coat.

Wood Distressing



Natural Distressing highlights the natural characteristics of the wood with no other distressing added. Worm holes and the associated mineral streaks in our maple tops are considered part of this — as is evident in the image at top.



Hand-Planed wood is, as the name suggests, planed by hand to create undulations in the surface of the wood. The result is an authentic, worn look.

Fusion Glass



Minimal Fusion Glass (GL2)

Fusion Glass is made of multiple layers of clear glass that have been fused together in an oven to create a very distinctive look. The low iron content of the glass gives it a pale blue hue, reminiscent of the color of a glacial lake. The underside has a slight mottled texture that complements the slight blue hue of the glass. Fusion comes in four different choices of bottom treatment: Minimal, Seascape, Glacier, and Pebble. Minimal is shown here, the other three on the page at right. Seascape, Glacier, and Pebble all have a far more pronounced bottom texture. All variations of Fusion are available in custom sizes.



Glacier Fusion Glass (GL2G)



Pebble Fusion Glass (GL2P)



Seascape Fusion Glass (GL2S)

Understanding The Look of Glass

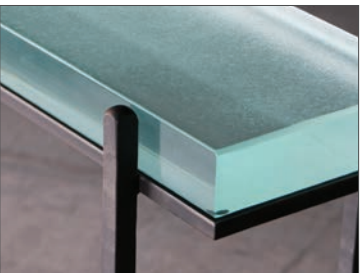
All glass has some color, and the thicker the glass is the more apparent that becomes. The glass we use at Charleston Forge has a low iron content, which can display a pale blue or greenish hue, depending on the surroundings. This is sometimes more evident in our Fusion glass, which is available up to 2 inches thick. Like all glass, the look of Fusion is heavily influenced by the color and intensity of the light passing through it and the environment around it.



Seascape Fusion (above and top right)



Minimal Fusion

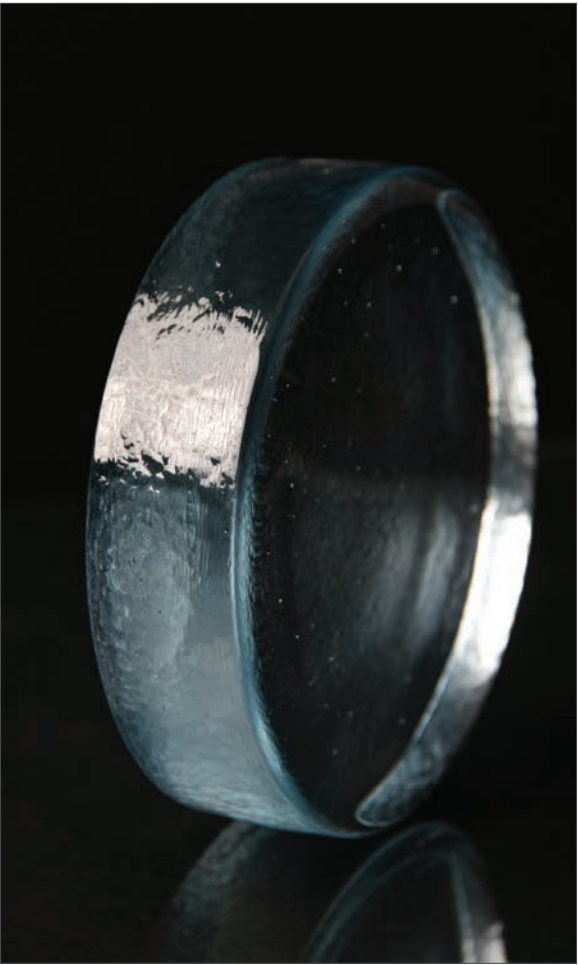




Facet Glass

Facet Glass is made of three 1/4-inch pieces of laminated glass. Once bonded together the center piece is shattered to create a random, faceted pattern. On tables that it is available, Facet Glass is inset into a 2 1/4-inch thick Maple frame. It is also available in custom sizes.

Cast Glass



Cast Glass is created by pouring molten glass into a mold. Each top is a one-of-a-kind piece of art featuring combinations of swirls, ripples, and bubbles, both on the surface as well as inside the glass. No two tops are alike and may vary from each other significantly. Cast Glass is available only as 1 1/2- inch thick, 6 3/4-inch diameter rounds.

Please note that, as with all glass, the look and color of a piece of glass is highly dependent on the color and intensity of the light falling on it, as well the color of the environment around it.

Riverside Glass



Visually, Riverside Glass is a blend of Fusion Glass and Cast Glass. A more organic look than some of our other styles, Riverside features a softer, more rounded edge and a more textured bottom surface than Cast Glass. Like Cast Glass, no two tops are alike and may vary from each other significantly. It is available in custom sizes.

Leather

			
Bourbon (L401)	Butter Rum (L402)	Cranberry (L403)	Fawn (L404)
			
Galaxy (L405)	Granite (L406)	Ivory Snow (L407)	Leaf (L408)
			
Mocha (L409)	Mosswood (L410)	Onyx (L411)	Pearlescent (L412)
			
Rosewood (L413)	Sterling (L414)	Terra (L415)	



Crypton® is exclusively available on Cortina Leathers. The result is stain, water, and bacteria-resistant leathers that have the same look, feel, and smell as unprotected leathers. They are highly durable, making them ideal for both residential and hospitality use.

Please note that leather, as a natural product, has variations in both color and pattern that occur from hide to hide and even within single hides. Additionally, the swatches shown on these pages may vary slightly in color from the actual materials due to the nature of the printing process.



Spa Lounge Chair

C655 w 32 x d 33¾ x h 27¼

Shown in Harvest finish (87)
Sterling leather cushion (L414)
Seat height is 16¼ (front of cushion)

Spa Small Drink Table

7738 Dia 8 x h 23

Shown in Brushed Silver finish (59)
Cast Glass top (GLC)



Calico Bay 26" Counterstools
C690 w 18¾ x d 24½ x h 38½
Shown in Burnished Iron finish (15)
Flint fabric cushion (F32)
Seat height is 26

Also available
C691 Calico Bay Barstool 30"

Fabric



Porcelain (F27)



Flax (F28)



Slate Blue (F29)



Cay (F30)



Jute (F31)



Flint (F32)



Bae A tight, homespun plaincloth created by weaving soft and slubby fill yarns on a coarse-count slub warp.
Contents: 100% Polyester Cleaning: Solvent or spot clean



Spray (F51)



Gulf (F52)



Mineral (F53)



Obsidian (F54)



Cadet (F55)



Caramel (F56)



Hemp (F57)



Coconut A soft texture tweed.
Contents: 53% Olefin, 47% Polyester Cleaning: Solvent or spot clean Cutting Direction: RR

The swatches shown on these pages may vary slightly in color from the actual materials due to the nature of the printing process.

Fabric



Jumper

A beautiful rayon bouclé in an ever-popular herringbone weave.
Contents: 83% Rayon, 15% Polyester, 2% Nylon Cleaning: Solvent or spot clean
Cutting Direction: RR, 2½" repeat.

About our fabric

Crypton Home: Stain and liquid repellent

All our fabrics are **Crypton Home** fabrics from Valdese Weavers. **Crypton Home** is a uniquely engineered liquid-repellent and stain-repellent finish that will not wash away or wear off for the life of the fabric. The patented technology encapsulates the fibers and will not let liquid or stains penetrate, thus giving it the highest performance for fabrics in the industry.



The fabrics shown on this page may vary slightly in color from the actual fabrics due to the nature of the printing process.

Cleaning



M340 Belvedere Bench

Spot Cleaning

The spot cleaning method of stain removal can be used for most light to medium stains.

- Before spot cleaning, blot up liquids on the surface with a clean, soft towel and brush off any loose dirt.
- Prepare a cleaning solution of 1/4 cup mild soap, such as Woolite® or Dawn® dishwashing liquid, per gallon of lukewarm water.
- Apply the cleaning solution using a misting spray bottle.
- Work the solution into the affected area by lightly scrubbing the area with a sponge or soft bristle brush. Make sure to work from the outside of the stain inward so as not to spread the stain and rinse your sponge or brush frequently.
- Allow cleaning solution to soak into the fabric.
- Rinse thoroughly to remove all soap residues, as residues will attract dirt. Blot excess moisture with a clean, soft towel or sponge.
- Repeat steps 3-6 as needed.
- Allow fabric to air dry.

Muslin (F01)

100% cotton. Available for customers who wish to apply their own fabric instead of COM.

Custom Program



Custom wine rack at Rooster's Woodfired Kitchen in Charlotte, NC.

As anyone who is familiar with Charleston Forge is aware, one of our greatest strengths is the fact that every single piece of furniture that comes out of our factory is built by hand. This gives us tremendous versatility when it comes to creating custom furniture for our clients across the country. It is something that we do literally every day.

Requesting A Quote

Charleston Forge welcomes the opportunity to create custom furniture for you. You may customize almost any existing or discontinued item, or create a design that is uniquely yours. Please follow the simple steps below to get your custom order started.

Fax or Email a quote request to our custom department.

Fax to: 828.264.5901
E-mail to: customs@charlestonforge.com

All communication regarding custom quotes and orders must be in writing. We are unable to provide custom quotes over the telephone. Be sure to include:

- Your company name and account number
- Precise measurements and instructions (include drawings if applicable)
- Desired wood species
- Desired metal and wood finishes
- Fabric or Leather choices

Quote Process.

- Each custom project is reviewed on an individual basis. A written quote is then prepared, explaining the projected costs and estimated lead time needed.
- Please allow at least 48 hours after sending in your request for us to finalize your quote. Sometimes the quote process is extended if we must get information from an outside supplier or if CAD drawings are required.
- Please note that in cases where a base or frame extends beyond a top or shelf, the dimensions on the CAD drawing may indicate overall size, and not the size of the table top or shelf.

Placing Your Order.

- When you are ready to order, email or fax the original quote back to us with a valid purchase order.
- Payment may be required before custom orders are processed.

Please note: We will not reproduce another manufacturer's design.

Barstools & Counterstools 156

C441	Fresno Swivel Barstool	171
C442	Fresno Swivel Counterstool	171
C660	Vero Barstool	168
C661	Vero Counterstool	168
C664	Sawyer Barstool	169
C665	Sawyer Counterstool	169
C684	Amalie Counterstool	156
C685	Amalie Barstool	156
C690	Calico Bay Counterstool	59, 163
C691	Calico Bay Barstool	59, 163
C761	Barkley Swivel Counterstool	168
C762	Barkley Swivel Barstool	168
C802	Ventura Swivel Counterstool	159
C803	Ventura Swivel Barstool	159
C860	Echo Swivel Barstool	168
C861	Echo Swivel Counterstool	168
C862	Aries Backless Swivel Counterstool	171
C863	Aries Backless Swivel Barstool	171
C864	Aries Swivel Counterstool	170, 171

C865	Aries Swivel Barstool	170, 171
C931	Spa Counterstool	62, 160
C932	Spa Barstool	62, 160
C933	Spa Backless Counterstool	27, 160
C934	Spa Backless Barstool	27, 160
C941	Emmitt Counterstool	54, 158
C942	Emmitt Barstool	54, 158
C946	Astor Counterstool	167
C947	Astor Barstool	167
C956	Victoria Counterstool	165
C957	Victoria Barstool	165
C961	Clement Counterstool	165
C962	Clement Barstool	165
C966	Naples Counterstool	164
C967	Naples Barstool	164
C978	Parsons Metal Seat Counterstool	166
C979	Parsons Metal Seat Barstool	167
C980	Parsons Wood Seat Counterstool	167
C981	Parsons Wood Seat Barstool	167

Bedroom 204

6610	Collins Nightstand	139, 205
6611	Collins Storage Console	30, 205
9130	Sloan Queen Bed	208
9131	Sloan King Bed	208
9132	Sloan Queen Canopy Bed	208
9133	Sloan King Canopy Bed	208

9140	Wilkes Queen Bed	209
9141	Wilkes King Bed	209
9160	Omega Queen Bed	206
9161	Omega King Bed	206
9182	Collins Queen Canopy Bed	204
9183	Collins King Canopy Bed	204

Benches & Ottomans 172

M212	Monarch 60" Bench	183
M214	Legacy 46" Bench	180
M216	Legacy 60" Bench	180
M222	Talmadge Bench	180
M223	Bradford Ottoman	182
M231	Warehouse Small Bench	181
M232	Monarch Small Bench	182
M234	Talmadge Small Bench	180

M301	Prague Bench	181
M302	Prague Small Bench	181
M340	Belvedere Bench	176
M342	Amalie Round Ottoman	174
M651	Emmitt Ottoman	177, 186
M655	Springhouse Ottoman	172, 184
M690	Beaufort Bench	76, 178
M710	Ashford Bench	173

Chairs 184

C440	Fresno Chair	51, 190
C650	Emmitt Lounge Chair	177, 186
C654	Springhouse Lounge Chair	184
C655	Spa Lounge Chair	187, 219
C656	Springhouse Sofa	185
C670	Vero Dining Chair	195
C672	Sawyer Dining Chair	190

C674	Naples Dining Chair	60, 189
C692	Calico Bay Dining Chair	190
C765	Barkley Chair	193
C801	Ventura Dining Chair	67, 191
C915	Astor Chair	48, 52, 58, 192
C930	Spa Dining Chair	189
C940	Emmitt Dining Chair	186

Consoles 12

5410	Newhart 34" Console	36
5411	Newhart 70" Console	36
5515	Monarch 55" Console	43
6053	Camden Console	46
6119	Watson 70" Console	37
6125	Cooper 70" Console	34
6131	Fontana Console	38
6135	Cooper 34" Console	33
6145	Cooper 34" Chairside Console	32
6146	Cooper 54" Console	33
6206	Roundabout Console	39
6294	Triumph Console	46
6309	Sawhorse 70" Console	47
6325	Lotus Console	38
6420	Taylor Console	30
6557	Linville 70" Console	42
6606	Collins Console	29
6611	Collins Storage Console	30, 205
6626	Crawford 54" Console	19
6993	Beaufort 70" Console	23
6994	Beaufort 34" Console	22

6997	Beaufort 54" Console	23
7006	Manhattan 54" Console	20
7120	Watson 34" Console	37
7215	Nash 54" Console	47
7309	Nashville 54" Console	42
7329	West End Console	15
7510	Omega 60" Console	45
7532	Jasper Gathering Console	26
7606	Fillmore Console	18
7706	Springhouse Console	40
7727	Ashford Console	18
7739	Spa 34" Console	14
7742	Spa Entertainment Console	16, 198
7743	Spa Gathering Console	26, 161
7807	Hatteras 70" Console	13, 197
7976	Biscayne 60" Console	21
7990	Calico Bay 34" Console	25
7991	Calico Bay 70" Console	24
8006	Belvedere Bar Cart	31
T875	Winston 60" Console	44

Desks 48

1210	Cooper Desk	51
1215	Talmadge Desk	50
1220	Newhart Desk	52
1225	Park West Desk	52

1240	Beaufort Desk	53
1250	Collins Desk	49
1260	Ashford Desk	48

Dining Tables 54

T01	Ventura Dining Table	67
T03	Savoy Dining Table	66
T04	Kern Dining Table	66
T09	Calico Bay Dining Table	59
T10	Sutton Round Dining Table	64
T11	Triumph Round Dining Table	68
T13	Ashford Dining Table	56, 63
T14	Naples Dining Table	60
T15	Spa Dining Table	62

Drink Tables 66

6050	Camden Drink Table	77
6290	Triumph Drink Table	95, 213
6417	Taylor Nesting Tables	86
6418	Taylor Drink Table	96
6558	Linville Drink Table	93
6608	Collins Drink Table	86
6628	Crawford Drink Table	78
6995	Beaufort Drink Table	76
6996	Horizon Drink Table	77
7008	Manhattan Drink Table	82
7203	Nash Round Drink Table	95
7207	Nash Rectangular Drink Table	95
7308	Nashville Drink Table	87
7328	West End Drink Table	73
7403	Cascade Drink Table	99
7404	Empire Drink Table	93
7407	Canton Drink Table	100
7410	Metro Drink Table	98
7412	Stiletto Drink Table	82
7414	Quad Drink Table	99
7415	Carolina Nesting Tables	101
7422	Lewis Drink Table	93

Étagères 196

8200	Collins Étagère	202
8201	Collins Storage Étagère	203
8210	Springhouse Étagère	200

T16	Emmitt Dining Table	54
T105	Legacy 60" Round Dining Table	63
T113	Legacy 48" Round Dining Table	63
T724	Triumph 72" Rectangular Dining Table	68
T725	Triumph 96" Rectangular Dining Table	68
T734	Sutton 72" Rectangular Dining Table	64
T735	Sutton 96" Rectangular Dining Table	64
T791	Biscayne 72" Dining Table	58, 192
T792	Biscayne 96" Dining Table	58

7425	Roundabout Drink Table	96
7426	Cooper Drink Table	80
7427	Lotus Drink Table	96
7433	Omega Drink Table	99
7438	Passage Drink Table	86
7450	Derby Drink Table	90
7451	Hampton Drink Table	91
7452	Rose Drink Table	91
7490	Jameson Drink Table	92
7608	Fillmore Drink Table	82
7708	Springhouse Drink Table	88
7728	Ashford Drink Table	83
7737	Spa Drink Table	74
7738	Spa Small Drink Table	75, 107, 187
7808	Hatteras Drink Table	71, 102
7809	Hatteras Small Drink Table	70
7978	Biscayne Drink Table	85
7995	Calico Bay Drink Table	77
8004	Tangle Drink Table	97
8005	Jasper Drink Table	100
T874	Winston Drink Table	100

8220	Fillmore Étagère	201
8230	Hatteras Étagère	196
8240	Spa Étagère	198

Occasional Tables 102

6014	Watson 42" Round Cocktail Table	149
6016	Watson 54" Square Cocktail Table	148
6017	Watson 54" Round Cocktail Table	149
6025	Cooper 54" Round Cocktail Table	121
6033	Cooper 42" Round Cocktail Table	121
6034	Cooper Round End Table	119
6035	Cooper 36" Round Cocktail Table	121
6051	Camden Round End Table	145
6052	Camden Round Cocktail Table	144
6054	Camden Rectangular Cocktail Table	144
6055	Camden Square End Table	145
6103	Ellipse End Table	151
6104	Ellipse Cocktail Table	150
6114	Watson 42" Square Cocktail Table	148
6115	Watson Round End Table	149
6117	Watson Square End Table	149
6118	Watson Rectangular Cocktail Table	148
6123	Cooper Square End Table	122
6124	Cooper Rectangular Cocktail Table	122
6129	Fontana End Table	123
6130	Fontana Cocktail Table	123
6133	Cooper 42" Square Cocktail Table	122
6204	Roundabout End Table	151
6205	Roundabout Cocktail Table	151
6291	Triumph End Table	132
6292	Triumph 36" Round Cocktail Table	132
6293	Triumph 48" Round Cocktail Table	132
6315	Lotus Round Cocktail Table	155
6320	Lotus Round End Table	155
6321	Lotus Square End Table	154
6322	Lotus Square Cocktail Table	154
6410	Taylor Round Cocktail Table	147
6412	Taylor Rectangular Cocktail Table	147
6414	Taylor Round End Table	146
6416	Taylor Square End Table	146
6550	Linville Cocktail Table	152
6553	Linville End Table	152
6600	Collins Cocktail Table	136
6603	Collins End Table	137

6610	Collins Nightstand	139, 205
6620	Crawford Cocktail Table	124
6623	Crawford End Table	125
6990	Beaufort 36" Cocktail Table	131
6991	Beaufort 48" Cocktail Table	131
6992	Beaufort End Table	130
7000	Manhattan Cocktail Table	115
7003	Manhattan End Table	114
7301	Nashville 36" Round Cocktail Table	112
7302	Nashville 42" Round Cocktail Table	112
7303	Nashville 48" Round Cocktail Table	112
7304	Nashville 54" Round Cocktail Table	112
7306	Nashville Round End Table	113
7320	West End Cocktail Table	109
7326	West End Side Table	11, 108
7513	Omega Square End Table	140
7514	Omega Round End Table	140
7516	Omega Rectangular Cocktail Table	141
7601	Fillmore 36" Round Cocktail Table	126
7602	Fillmore 42" Round Cocktail Table	126
7603	Fillmore Round End Table	127
7700	Springhouse Cocktail Table	129
7703	Springhouse End Table	128
7711	Ashford 36" Round Cocktail Table	110
7722	Ashford 42" Round Cocktail Table	110
7723	Ashford 48" Round Cocktail Table	110
7724	Ashford 54" Round Cocktail Table	110
7726	Ashford Round End Table	112
7731	Spa Cocktail Table	107
7736	Spa End Table	106
7800	Hatteras Rectangular Cocktail Table	102, 105
7805	Hatteras Rectangular End Table	103, 104
7806	Hatteras Round End Table	104
7970	Biscayne Cocktail Table	116
7973	Biscayne End Table	117
7996	Calico Bay End Table	135
7997	Calico Bay Cocktail Table	134
T870	Winston Rectangular Cocktail Table	142
T872	Winston End Table	142

Charleston Forge

251 Industrial Park Drive

Boone, North Carolina 28607

tel: 828.264.0100

www.CharlestonForge.com

